



**XIJIE**<sup>®</sup> 希洁五金

Decorative hardware solution manual

裝飾五金解決方案手冊



Professional/  
achievement/role model  
专注 / 成就 / 典范





# CATALOG 目录

## A 面

A001- A038	Bathroom glass clamp series 浴室玻璃夹系列	A072- A072	Rope bell series 绳钟系列
A039- A050	Glass fittings series 玻璃连接件系列	A073- A076	Glass door clamp series 玻璃门夹系列
A051- A060	Bathroom handle series 浴室拉手系列	A077- A078	Concealed floor spring series 隐藏式地弹簧系列
A061- A064	Bathroom Hanger Series 卫浴挂件系列	A079- A088	Connectors integrated solution 连接件组合方案
A065- A066	Tissue box / frame series 纸巾盒 / 架系列	A089- A090	Sliding door handle series 移门拉手系列
A067- A071	Robe hook series 衣钩系列		

## B 面

B001- A049	Glass door lock series 玻璃门锁系列	B050- B050	Door shaft accessories series 门轴配件系列
B051- B060	Door closers series 闭门器系列		



## ABOUT XIJIE 关于 希洁

ZHAOQING RIYI DECORATION HARDWARE CO., LTD · RIYI DECORATION HARDWARE FACTORY (RIYI HARDWARE ENTERPRISE) is a professional manufacturer of glass gated hardware, bathroom hardware products, is the professional production of decorative metal one of the manufacturers. Its XIJIE 希洁 Brand reputation of the industry's high reputation, the company has strong technical force, sophisticated processing equipment, advanced production technology, and high-precision test methods. We continue to develop and develop a variety of glass gated, bathroom hardware products and exported to domestic and foreign.

In the fierce market competition, the company created a high-quality, high-level professional production team. Production of decorative hardware products, the full range of unique style, superb technology, which won the praise of Chinese and foreign customers and rely on, while in the country to establish a strong network of services, the main part of the Northeast, North China and East China, South China, Southwest, Southeast Asia, the Middle East and so on more than 10 countries and regions, while the industry's high-end brands of OEM service providers. RIYI hardware companies adhere to the quality of survival, innovation and development, scientific and technological progress to plant, to the credibility of the market based on the purpose, by the majority of customers and consumers of all ages.

肇慶市日益裝飾五金有限公司·日益裝飾五金廠(日益五金企業)是一家專業生產玻璃門控五金、衛浴五金產品,是國內專業生產裝飾五金的制造商之一。旗下 XIJIE 希洁 品牌享譽業內崇高的知名度,本公司擁有雄厚的技術力量、精良的加工設備、先進的生產工藝、與高精度的測試手段。我們不斷地開發與研制各種玻璃門控、衛浴五金產品,并遠銷國內外。

在激烈的市場競爭中,本公司創建了一支高素質、高水平的專業生產隊伍。生產的裝飾五金產品,品種齊全風格獨特、工藝精湛,從而贏得了中外客戶的好評及依賴,同時在國內建立了一套強大的網絡服務,主要部分在東北地區,華北地區及華東地區、華南地區,西南地區,與國內一、二線等中心城市,并遠銷歐美、南、北美洲、東南亞、中東等十幾個國家和地區,同時為行業內高端大品牌的 OEM 服務商。日益五金企業堅持以質量求生存,以創新求發展,以科技進步興廠,以信譽立足市場的宗旨,深受廣大客戶和消費者的青睞。





## BATHROOM GLASS CLAMP SERIES

# 浴室玻璃夹 系列

细节体现完美, 造型美观时尚, 使用舒适方便,  
让您的卫浴空间十全十美, 令您的卫浴生活舒畅淋漓,  
体现我们无微不至的关怀。

The details are perfect, stylish and stylish, comfortable and convenient,  
Let your bathroom space is perfect, your bathroom life is comfortable,  
It shows our meticulous care.

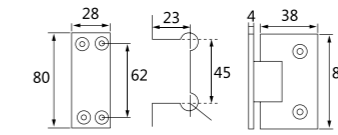






### XJ-401A

80# 方形 90°双边玻璃浴室夹  
80# Square-double 90°  
Glass bathroom Clamp



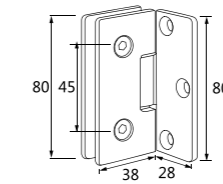
材质: 不锈钢  
表面处理: 砂光 / 镜光  
承重: 40kg/ 对  
适用于门宽 800-1000mm, 厚度 8-12mm 玻璃门安装,  
门关至约 25°时, 门会自关闭。  
注意: 玻璃必需钢化

Material:Stainless steel  
Firish:SSS/ PSS  
Bearing weight:40kg/Pair  
Applicable for 800-1000mm wide and 8-12mm  
thick glass door,Door will be close automatically at  
approximately 25°  
Note:Glass must be toughened

● 镜光 /PSS ● 砂光 /SSS

### XJ-402A

80# 方形 90°单边玻璃浴室夹  
80# Spuare-single 90°  
Glass bathroom Clamp



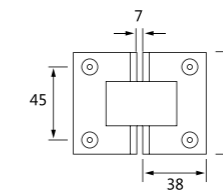
材质: 不锈钢  
表面处理: 砂光 / 镜光  
承重: 40kg/ 对  
适用于门宽 800-1000mm, 厚度 8-12mm 玻璃门安装,  
门关至约 25°时, 门会自关闭。  
注意: 玻璃必需钢化

Material:Stainless steel  
Firish:SSS/ PSS  
Bearing weight:40kg/Pair  
Applicable for 800-1000mm wide and 8-12mm  
thick glass door,Door will be close automatically at  
approximately 25°  
Note:Glass must be toughened

● 镜光 /PSS ● 砂光 /SSS

### XJ-403A

80# 方形 135°玻璃浴室夹  
80# Spuare 135° Glass bathroom  
Clamp



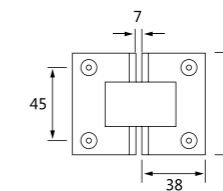
材质: 不锈钢  
表面处理: 砂光 / 镜光  
承重: 40kg/ 对  
适用于门宽 800-1000mm, 厚度 8-12mm 玻璃门安装,  
门关至约 25°时, 门会自关闭。  
注意: 玻璃必需钢化

Material:Stainless steel  
Firish:SSS/ PSS  
Bearing weight:40kg/Pair  
Applicable for 800-1000mm wide and 8-12mm  
thick glass door,Door will be close automatically at  
approximately 25°  
Note:Glass must be toughened

● 镜光 /PSS ● 砂光 /SSS

### XJ-404A

80# 方形 180°玻璃浴室夹  
80# Spuare 180° Glass bathroom  
Clamp



材质: 不锈钢  
表面处理: 砂光 / 镜光  
承重: 40kg/ 对  
适用于门宽 800-1000mm, 厚度 8-12mm 玻璃门安装,  
门关至约 25°时, 门会自关闭。  
注意: 玻璃必需钢化

Material:Stainless steel  
Firish:SSS/ PSS  
Bearing weight:40kg/Pair  
Applicable for 800-1000mm wide and 8-12mm  
thick glass door,Door will be close automatically at  
approximately 25°  
Note:Glass must be toughened

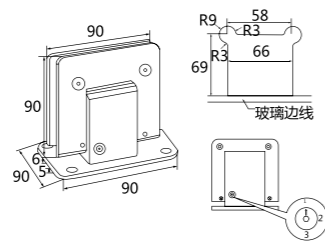
● 镜光 /PSS ● 砂光 /SSS





### XJ-2017A

缓冲 90°双开玻璃浴室夹  
Buffered 90° double open glass bathroom clamp



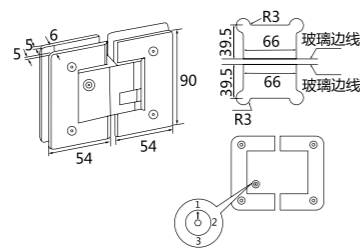
材质: 304# 不锈钢 / 铝合金  
表面处理: 砂光 / 镜光  
承重: 45kg/ 对  
适用于门宽 1000mm, 厚度 8-12mm 玻璃门安装,  
注意: 玻璃必需钢化  
门关至约 60°时, 门会缓冲关闭, 力度可调

Material:304# Stainless steel/Aluminum alloy  
Firish:SSS/ PSS  
Bearing weight:45kg/Pair  
Applicable for 1000mm wide and 8-12mm thick glass door,  
Note:Glass must be toughened  
Door to about 60°, the door will be closed, the intensity is adjustable

● 镜光 / PSS ● 砂光 / SSS

### XJ-2017B

缓冲 180°玻璃浴室夹  
Buffer 180° glass bathroom clamp



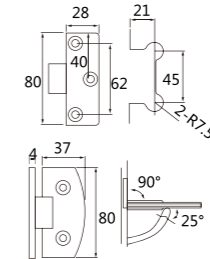
材质: 304# 不锈钢 / 铝合金  
表面处理: 砂光 / 镜光  
承重: 45kg/ 对  
适用于门宽 1000mm, 厚度 8-12mm 玻璃门安装,  
注意: 玻璃必需钢化  
门关至约 60°时, 门会缓冲关闭, 力度可调

Material:304# Stainless steel/Aluminum alloy  
Firish:SSS/ PSS  
Bearing weight:45kg/Pair  
Applicable for 1000mm wide and 8-12mm thick glass door,  
Note:Glass must be toughened  
Door to about 60°, the door will be closed, the intensity is adjustable

● 镜光 / PSS ● 砂光 / SSS

### XJ-401

弧形 90°单边玻璃浴室夹  
Arc 90° Glass bathroom Clamp



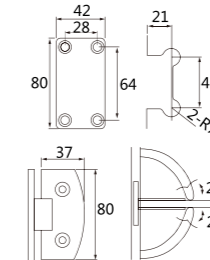
材质: 不锈钢  
表面处理: 砂光 / 镜光  
承重: 40kg/ 对  
适用于门宽 800-1000mm, 厚度 8-12mm 玻璃门安装,  
门关至约 25°时, 门会自关闭。  
注意: 玻璃必需钢化 尺寸: 80#/100#

Material:Stainless steel  
Firish:SSS/ PSS  
Bearing weight:40kg/Pair  
Applicable for 800-1000mm wide and 8-12mm thick glass door,Door will be close automatically at approximately 25°  
Note:Glass must be toughened  
Size: 80#/100#

● 镜光 / PSS ● 砂光 / SSS

### XJ-402

弧形 90°双边玻璃浴室夹  
Arc 90° Glass bathroom Clamp



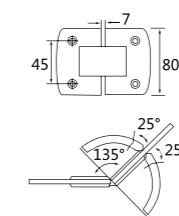
材质: 不锈钢  
表面处理: 砂光 / 镜光  
承重: 40kg/ 对  
适用于门宽 800-1000mm, 厚度 8-12mm 玻璃门安装,  
门关至约 25°时, 门会自关闭。  
注意: 玻璃必需钢化 尺寸: 80#/100#

Material:Stainless steel  
Firish:SSS/ PSS  
Bearing weight:40kg/Pair  
Applicable for 800-1000mm wide and 8-12mm thick glass door,Door will be close automatically at approximately 25°  
Note:Glass must be toughened  
Size: 80#/100#

● 镜光 / PSS ● 砂光 / SSS

### XJ-403

弧形 135°玻璃浴室夹  
Arc 135° Glass bathroom Clamp



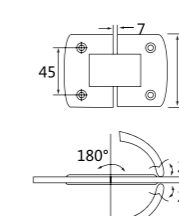
材质: 不锈钢  
表面处理: 砂光 / 镜光  
承重: 40kg/ 对  
适用于门宽 800-1000mm, 厚度 8-12mm 玻璃门安装,  
门关至约 25°时, 门会自关闭。  
注意: 玻璃必需钢化 尺寸: 80#/100#

Material:Stainless steel  
Firish:SSS/ PSS  
Bearing weight:40kg/Pair  
Applicable for 800-1000mm wide and 8-12mm thick glass door,Door will be close automatically at approximately 25°  
Note:Glass must be toughened  
Size: 80#/100#

● 镜光 / PSS ● 砂光 / SSS

### XJ-404

弧形 180°玻璃浴室夹  
Arc 180° Glass bathroom Clamp



材质: 不锈钢  
表面处理: 砂光 / 镜光  
承重: 40kg/ 对  
适用于门宽 800-1000mm, 厚度 8-12mm 玻璃门安装,  
门关至约 25°时, 门会自关闭。  
注意: 玻璃必需钢化 尺寸: 80#/100#

Material:Stainless steel  
Firish:SSS/ PSS  
Bearing weight:40kg/Pair  
Applicable for 800-1000mm wide and 8-12mm thick glass door,Door will be close automatically at approximately 25°  
Note:Glass must be toughened  
Size: 80#/100#

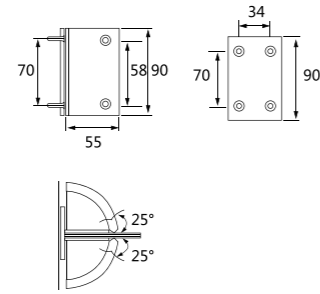
● 镜光 / PSS ● 砂光 / SSS





**XJ-101**

直边 0°固定玻璃浴室夹  
Straight 0° fixed glass bathroom  
Clamp



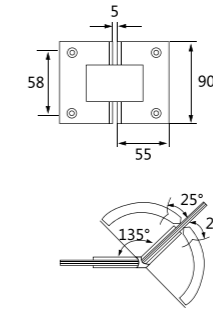
材质: 不锈钢 / 锌合金 / 铜  
表面处理: 砂光 / 镜光  
承重: 40kg/ 对  
适用于门宽 800-1000mm, 厚度 8-12mm 玻璃门安装,  
门关至约 25°时, 门会自关闭。  
注意: 玻璃必需钢化

Material:Stainless steel/Zinc alloy/ Copper  
Firish:SSS/ PSS  
Bearing weight:40kg/Pair  
Applicable for 800-1000mm wide and  
8-12mm thick glass door,Door will be close  
automatically at approximately 25°  
Note:Glass must be toughened

● 镜光 /PSS ● 砂光 /SSS

**XJ-104**

直边 135°玻璃浴室夹  
Straight 135° Glass bathroom  
Clamp



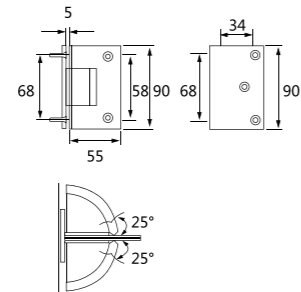
材质: 不锈钢 / 锌合金 / 铜  
表面处理: 砂光 / 镜光  
承重: 40kg/ 对  
适用于门宽 800-1000mm, 厚度 8-12mm 玻璃门安装,  
门关至约 25°时, 门会自关闭。  
注意: 玻璃必需钢化

Material:Stainless steel/Zinc alloy/ Copper  
Firish:SSS/ PSS  
Bearing weight:40kg/Pair  
Applicable for 800-1000mm wide and  
8-12mm thick glass door,Door will be close  
automatically at approximately 25°  
Note:Glass must be toughened

● 镜光 /PSS ● 砂光 /SSS

**XJ-102**

直边 90°单边玻璃浴室夹  
Straight 90° unilateral Glass  
bathroom Clamp



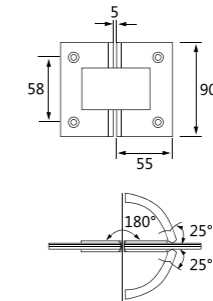
材质: 不锈钢 / 锌合金 / 铜  
表面处理: 砂光 / 镜光  
承重: 40kg/ 对  
适用于门宽 800-1000mm, 厚度 8-12mm 玻璃门安装,  
门关至约 25°时, 门会自关闭。  
注意: 玻璃必需钢化

Material:Stainless steel/Zinc alloy/ Copper  
Firish:SSS/ PSS  
Bearing weight:40kg/Pair  
Applicable for 800-1000mm wide and  
8-12mm thick glass door,Door will be close  
automatically at approximately 25°  
Note:Glass must be toughened

● 镜光 /PSS ● 砂光 /SSS

**XJ-105**

直边 180°玻璃浴室夹  
Straight 180° Glass bathroom  
Clamp



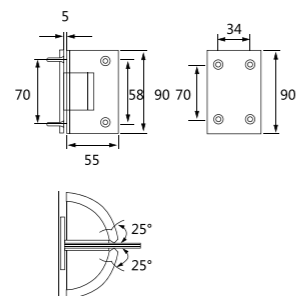
材质: 不锈钢 / 锌合金 / 铜  
表面处理: 砂光 / 镜光  
承重: 40kg/ 对  
适用于门宽 800-1000mm, 厚度 8-12mm 玻璃门安装,  
门关至约 25°时, 门会自关闭。  
注意: 玻璃必需钢化

Material:Stainless steel/Zinc alloy/ Copper  
Firish:SSS/ PSS  
Bearing weight:40kg/Pair  
Applicable for 800-1000mm wide and  
8-12mm thick glass door,Door will be close  
automatically at approximately 25°  
Note:Glass must be toughened

● 镜光 /PSS ● 砂光 /SSS

**XJ-103**

直边 90°双边玻璃浴室夹  
Straight 90° bilateral Glass  
bathroom Clamp



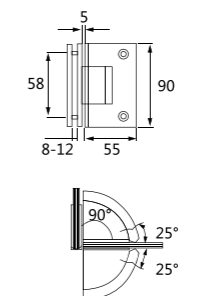
材质: 不锈钢 / 锌合金 / 铜  
表面处理: 砂光 / 镜光  
承重: 40kg/ 对  
适用于门宽 800-1000mm, 厚度 8-12mm 玻璃门安装,  
门关至约 25°时, 门会自关闭。  
注意: 玻璃必需钢化

Material:Stainless steel/Zinc alloy/ Copper  
Firish:SSS/ PSS  
Bearing weight:40kg/Pair  
Applicable for 800-1000mm wide and  
8-12mm thick glass door,Door will be close  
automatically at approximately 25°  
Note:Glass must be toughened

● 镜光 /PSS ● 砂光 /SSS

**XJ-106**

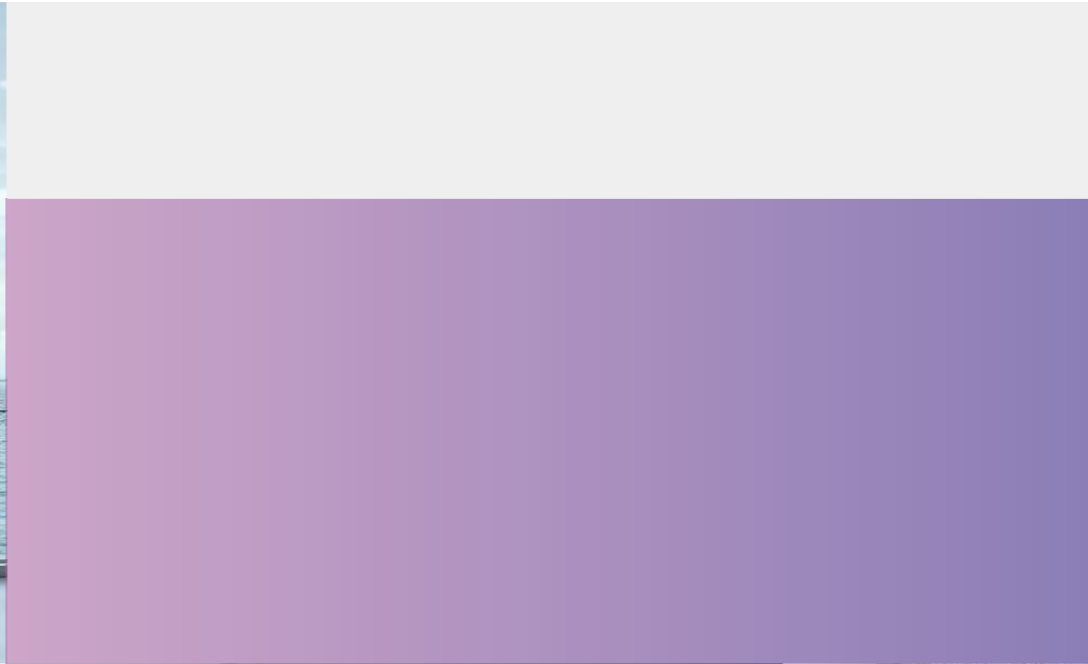
直边 90°双页玻璃浴室夹  
Straight 90° double page Glass  
bathroom clamp



材质: 不锈钢 / 锌合金 / 铜  
表面处理: 砂光 / 镜光  
承重: 40kg/ 对  
适用于门宽 800-1000mm, 厚度 8-12mm 玻璃门安装,  
门关至约 25°时, 门会自关闭。  
注意: 玻璃必需钢化

Material:Stainless steel/Zinc alloy/ Copper  
Firish:SSS/ PSS  
Bearing weight:40kg/Pair  
Applicable for 800-1000mm wide and  
8-12mm thick glass door,Door will be close  
automatically at approximately 25°  
Note:Glass must be toughened

● 镜光 /PSS ● 砂光 /SSS



灵感的源泉来自对生活艺术的深刻感悟，只有纯粹的美感、独特的设计才能触动心灵目光。

匠心独运，典藏尊贵，内敛的奢华，艺术与生活的完美结合，希洁卫浴以贯彻不渝的精品要求选用制造主材，打造完美的卫浴空间。

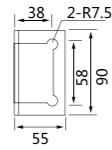
# SOURCE OF INSPIRATION





### XJ-201

斜边 0°固定玻璃浴室夹  
Hypotenuse 0° Glass bathroom Clamp



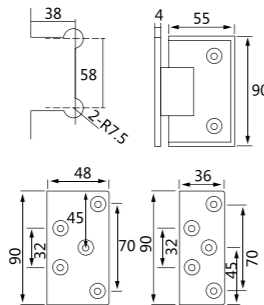
材质: 不锈钢 / 锌合金 / 铜  
表面处理: 砂光 / 镜光  
承重: 40kg/ 对  
适用于门宽 800-1000mm, 厚度 8-12mm 玻璃门安装,  
门关至约 25°时, 门会自关闭。  
注意: 玻璃必需钢化

Material:Stainless steel/Zinc alloy/ Copper  
Firish:SSS/ PSS  
Bearing weight:40kg/Pair  
Applicable for 800-1000mm wide and  
8-12mm thick glass door,Door will be close  
automatically at approximately 25°  
Note:Glass must be toughened

● 镜光 /PSS ● 砂光 /SSS

### XJ-202

斜边 90°单边玻璃浴室夹  
Hypotenuse 90° Glass bathroom Clamp



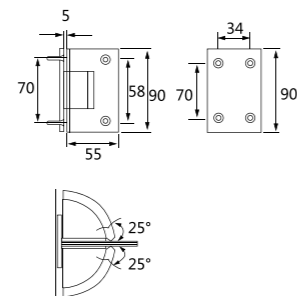
材质: 不锈钢 / 锌合金 / 铜  
表面处理: 砂光 / 镜光  
承重: 40kg/ 对  
适用于门宽 800-1000mm, 厚度 8-12mm 玻璃门安装,  
门关至约 25°时, 门会自关闭。  
注意: 玻璃必需钢化

Material:Stainless steel/Zinc alloy/ Copper  
Firish:SSS/ PSS  
Bearing weight:40kg/Pair  
Applicable for 800-1000mm wide and  
8-12mm thick glass door,Door will be close  
automatically at approximately 25°  
Note:Glass must be toughened

● 镜光 /PSS ● 砂光 /SSS

### XJ-203

斜边 90°双边玻璃浴室夹  
Hypotenuse 90° Glass bathroom Clamp



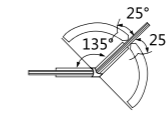
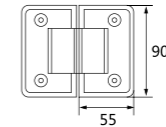
材质: 不锈钢 / 锌合金 / 铜  
表面处理: 砂光 / 镜光  
承重: 40kg/ 对  
适用于门宽 800-1000mm, 厚度 8-12mm 玻璃门安装,  
门关至约 25°时, 门会自关闭。  
注意: 玻璃必需钢化

Material:Stainless steel/Zinc alloy/ Copper  
Firish:SSS/ PSS  
Bearing weight:40kg/Pair  
Applicable for 800-1000mm wide and  
8-12mm thick glass door,Door will be close  
automatically at approximately 25°  
Note:Glass must be toughened

● 镜光 /PSS ● 砂光 /SSS

### XJ-204

斜边 135°玻璃浴室夹  
Hypotenuse 135° Glass bathroom Clamp



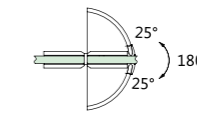
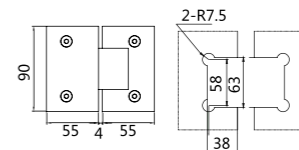
材质: 不锈钢 / 锌合金 / 铜  
表面处理: 砂光 / 镜光  
承重: 40kg/ 对  
适用于门宽 800-1000mm, 厚度 8-12mm 玻璃门安装,  
门关至约 25°时, 门会自关闭。  
注意: 玻璃必需钢化

Material:Stainless steel/Zinc alloy/ Copper  
Firish:SSS/ PSS  
Bearing weight:40kg/Pair  
Applicable for 800-1000mm wide and  
8-12mm thick glass door,Door will be close  
automatically at approximately 25°  
Note:Glass must be toughened

● 镜光 /PSS ● 砂光 /SSS

### XJ-205

斜边 180°玻璃浴室夹  
Hypotenuse 180° Glass bathroom Clamp



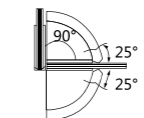
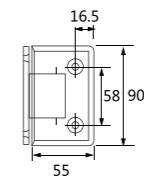
材质: 不锈钢 / 锌合金 / 铜  
表面处理: 砂光 / 镜光  
承重: 40kg/ 对  
适用于门宽 800-1000mm, 厚度 8-12mm 玻璃门安装,  
门关至约 25°时, 门会自关闭。  
注意: 玻璃必需钢化

Material:Stainless steel/Zinc alloy/ Copper  
Firish:SSS/ PSS  
Bearing weight:40kg/Pair  
Applicable for 800-1000mm wide and  
8-12mm thick glass door,Door will be close  
automatically at approximately 25°  
Note:Glass must be toughened

● 镜光 /PSS ● 砂光 /SSS

### XJ-206

斜边 90°双页玻璃浴室夹  
Twill 90° double page glass bathroom clamp



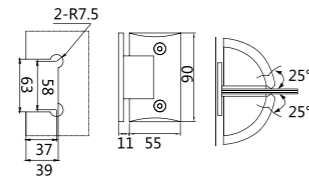
材质: 不锈钢 / 锌合金 / 铜  
表面处理: 砂光 / 镜光  
承重: 40kg/ 对  
适用于门宽 800-1000mm, 厚度 8-12mm 玻璃门安装,  
门关至约 25°时, 门会自关闭。  
注意: 玻璃必需钢化

Material:Stainless steel/Zinc alloy/ Copper  
Firish:SSS/ PSS  
Bearing weight:40kg/Pair  
Applicable for 800-1000mm wide and  
8-12mm thick glass door,Door will be close  
automatically at approximately 25°  
Note:Glass must be toughened

● 镜光 /PSS ● 砂光 /SSS

**XJ-303**

弧面 90°双边玻璃浴室夹  
Arc 90° Glass bathroom Clamp



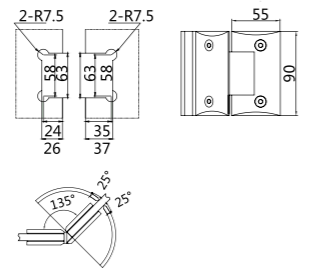
材质: 不锈钢 / 锌合金 / 铜  
表面处理: 砂光 / 镜光  
承重: 40kg/对  
适用于门宽 800-1000mm, 厚度 8-12mm 玻璃门安装,  
门关至约 25°时, 门会自关闭。  
注意: 玻璃必需钢化

Material: Stainless steel / Zinc alloy / Copper  
Finish: SSS / PSS  
Bearing weight: 40kg / Pair  
Applicable for 800-1000mm wide and 8-12mm thick glass door, Door will be close automatically at approximately 25°  
Note: Glass must be toughened

● 镜光 / PSS ● 砂光 / SSS

**XJ-304**

弧面 135°玻璃浴室夹  
Arc 135° Glass bathroom Clamp



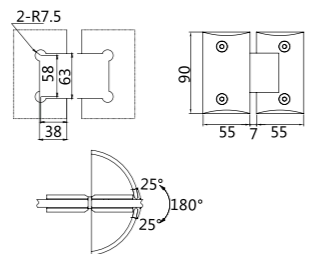
材质: 不锈钢 / 锌合金 / 铜  
表面处理: 砂光 / 镜光  
承重: 40kg/对  
适用于门宽 800-1000mm, 厚度 8-12mm 玻璃门安装,  
门关至约 25°时, 门会自关闭。  
注意: 玻璃必需钢化

Material: Stainless steel / Zinc alloy / Copper  
Finish: SSS / PSS  
Bearing weight: 40kg / Pair  
Applicable for 800-1000mm wide and 8-12mm thick glass door, Door will be close automatically at approximately 25°  
Note: Glass must be toughened

● 镜光 / PSS ● 砂光 / SSS

**XJ-305**

弧面 135°玻璃浴室夹  
Arc 135° Glass bathroom Clamp



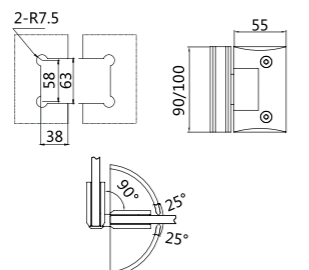
材质: 不锈钢 / 锌合金 / 铜  
表面处理: 砂光 / 镜光  
承重: 40kg/对  
适用于门宽 800-1000mm, 厚度 8-12mm 玻璃门安装,  
门关至约 25°时, 门会自关闭。  
注意: 玻璃必需钢化

Material: Stainless steel / Zinc alloy / Copper  
Finish: SSS / PSS  
Bearing weight: 40kg / Pair  
Applicable for 800-1000mm wide and 8-12mm thick glass door, Door will be close automatically at approximately 25°  
Note: Glass must be toughened

● 镜光 / PSS ● 砂光 / SSS

**XJ-306**

弧面 90°玻璃浴室夹  
Arc 90° Glass bathroom Clamp



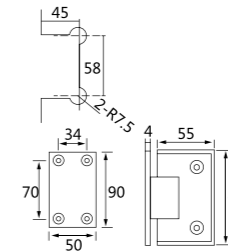
材质: 不锈钢 / 锌合金 / 铜  
表面处理: 砂光 / 镜光  
承重: 40kg/对  
适用于门宽 800-1000mm, 厚度 8-12mm 玻璃门安装,  
门关至约 25°时, 门会自关闭。  
注意: 玻璃必需钢化

Material: Stainless steel / Zinc alloy / Copper  
Finish: SSS / PSS  
Bearing weight: 40kg / Pair  
Applicable for 800-1000mm wide and 8-12mm thick glass door, Door will be close automatically at approximately 25°  
Note: Glass must be toughened

● 镜光 / PSS ● 砂光 / SSS

**XJ-501**

精准定位 90°双边玻璃浴室夹  
Precision positioning 90° bilateral glass bathroom Clamp



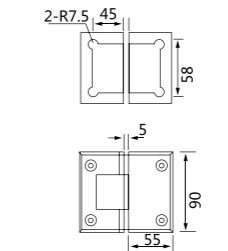
材质: 锌合金  
表面处理: 砂光 / 镜光  
承重: 40kg/对  
适用于门宽 800-1000mm, 厚度 8-12mm 玻璃门安装,  
门关至约 25°时, 门会自关闭。  
注意: 玻璃必需钢化

Material: Zinc alloy  
Finish: SSS / PSS  
Bearing weight: 40kg / Pair  
Applicable for 800-1000mm wide and 8-12mm thick glass door, Door will be close automatically at approximately 25°  
Note: Glass must be toughened

● 镜光 / PSS ● 砂光 / SSS

**XJ-502**

精准定位 135°玻璃浴室夹  
Precision positioning 135° glass bathroom Clamp



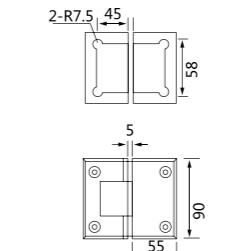
材质: 锌合金  
表面处理: 砂光 / 镜光  
承重: 40kg/对  
适用于门宽 800-1000mm, 厚度 8-12mm 玻璃门安装,  
门关至约 25°时, 门会自关闭。  
注意: 玻璃必需钢化

Material: Zinc alloy  
Finish: SSS / PSS  
Bearing weight: 40kg / Pair  
Applicable for 800-1000mm wide and 8-12mm thick glass door, Door will be close automatically at approximately 25°  
Note: Glass must be toughened

● 镜光 / PSS ● 砂光 / SSS

**XJ-503**

精准定位 180°玻璃浴室夹  
Precision positioning 180° glass bathroom Clamp



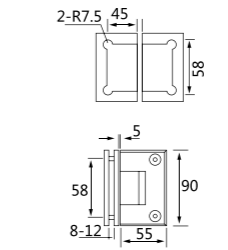
材质: 锌合金  
表面处理: 砂光 / 镜光  
承重: 40kg/对  
适用于门宽 800-1000mm, 厚度 8-12mm 玻璃门安装,  
门关至约 25°时, 门会自关闭。  
注意: 玻璃必需钢化

Material: Zinc alloy  
Finish: SSS / PSS  
Bearing weight: 40kg / Pair  
Applicable for 800-1000mm wide and 8-12mm thick glass door, Door will be close automatically at approximately 25°  
Note: Glass must be toughened

● 镜光 / PSS ● 砂光 / SSS

**XJ-504**

精准定位 90°双页玻璃浴室夹  
Precision positioning 90° double page glass bathroom Clamp



材质: 锌合金  
表面处理: 砂光 / 镜光  
承重: 40kg/对  
适用于门宽 800-1000mm, 厚度 8-12mm 玻璃门安装,  
门关至约 25°时, 门会自关闭。  
注意: 玻璃必需钢化

Material: Zinc alloy  
Finish: SSS / PSS  
Bearing weight: 40kg / Pair  
Applicable for 800-1000mm wide and 8-12mm thick glass door, Door will be close automatically at approximately 25°  
Note: Glass must be toughened

● 镜光 / PSS ● 砂光 / SSS





质朴自然的卫浴空间，像一阵微风拂过平静的湖面，荡漾起层层涟漪；又犹如跨越千年，呈现在人们眼前的惊艳青瓷。

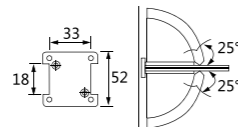
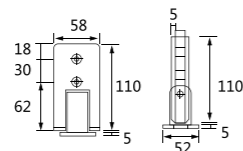
Rustic natural bathroom space, like a burst of breeze blowing over the calm lake, rippling layers of ripples, and as if across the millennium, presented in front of people stunning celadon.





### XJ-701

90°长方单边玻璃浴室夹  
Rectangular 90° Glass  
bathroom Clamp



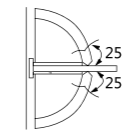
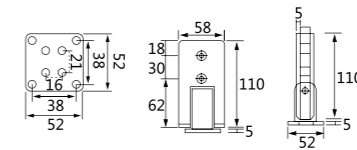
材质: 不锈钢  
表面处理: 砂光 / 镜光  
承重: 45kg/ 对  
适用于门宽 800-1000mm, 厚度 8-12mm 玻璃门安装,  
门关至约 25°时, 门会自关闭。  
注意: 玻璃必需钢化

Material:Stainless steel  
Firish:SSS/ PSS  
Bearing weight:45kg/Pair  
Applicable for 800-1000mm wide and  
8-12mm thick glass door,Door will be close  
automatically at approximately 25°  
Note:Glass must be toughened

● 镜光 /PSS ● 砂光 /SSS

### XJ-702

90°长方双边玻璃浴室夹  
Rectangular 90° Glass  
bathroom Clamp



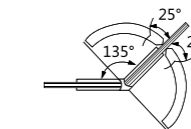
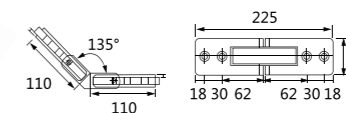
材质: 不锈钢  
表面处理: 砂光 / 镜光  
承重: 45kg/ 对  
适用于门宽 800-1000mm, 厚度 8-12mm 玻璃门安装,  
门关至约 25°时, 门会自关闭。  
注意: 玻璃必需钢化

Material:Stainless steel  
Firish:SSS/ PSS  
Bearing weight:45kg/Pair  
Applicable for 800-1000mm wide and  
8-12mm thick glass door,Door will be close  
automatically at approximately 25°  
Note:Glass must be toughened

● 镜光 /PSS ● 砂光 /SSS

### XJ-703

135°长方玻璃浴室夹  
Rectangular 135° Glass  
bathroom Clamp



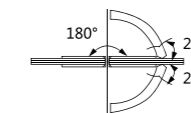
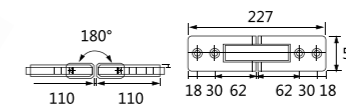
材质: 不锈钢  
表面处理: 砂光 / 镜光  
承重: 45kg/ 对  
适用于门宽 800-1000mm, 厚度 8-12mm 玻璃门安装,  
门关至约 25°时, 门会自关闭。  
注意: 玻璃必需钢化

Material:Stainless steel  
Firish:SSS/ PSS  
Bearing weight:45kg/Pair  
Applicable for 800-1000mm wide and  
8-12mm thick glass door,Door will be close  
automatically at approximately 25°  
Note:Glass must be toughened

● 镜光 /PSS ● 砂光 /SSS

### XJ-704

180°长方玻璃浴室夹  
Rectangular 180° Glass  
bathroom Clamp



材质: 不锈钢  
表面处理: 砂光 / 镜光  
承重: 45kg/ 对  
适用于门宽 800-1000mm, 厚度 8-12mm 玻璃门安装,  
门关至约 25°时, 门会自关闭。  
注意: 玻璃必需钢化

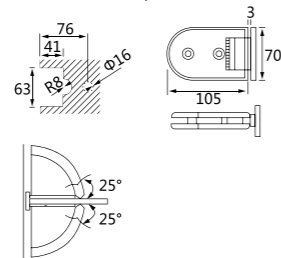
Material:Stainless steel  
Firish:SSS/ PSS  
Bearing weight:45kg/Pair  
Applicable for 800-1000mm wide and  
8-12mm thick glass door,Door will be close  
automatically at approximately 25°  
Note:Glass must be toughened

● 镜光 /PSS ● 砂光 /SSS



**XJ-801**

90°长半圆玻璃浴室夹  
90° long semicircular glass  
bathroom Clamp



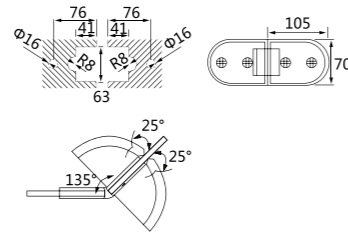
材质: 不锈钢 / 铜  
表面处理: 砂光 / 镜光  
承重: 45kg / 对  
适用于门宽 800-1000mm, 厚度 8-12mm 玻璃门安装,  
门关至约 25°时, 门会自关闭。  
注意: 玻璃必需钢化

Material: Stainless steel / Copper  
Finish: SSS / PSS  
Bearing weight: 45kg / Pair  
Applicable for 800-1000mm wide and 8-12mm  
thick glass door, Door will be close automatically at  
approximately 25°  
Note: Glass must be toughened

● 镜光 / PSS ● 砂光 / SSS

**XJ-802**

135°长半圆玻璃浴室夹  
135° long semicircular glass  
bathroom Clamp



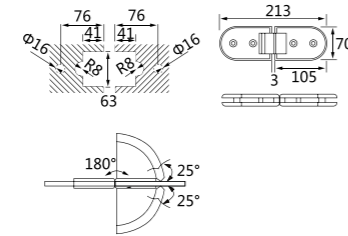
材质: 不锈钢 / 铜  
表面处理: 砂光 / 镜光  
承重: 45kg / 对  
适用于门宽 800-1000mm, 厚度 8-12mm 玻璃门安装,  
门关至约 25°时, 门会自关闭。  
注意: 玻璃必需钢化

Material: Stainless steel / Copper  
Finish: SSS / PSS  
Bearing weight: 45kg / Pair  
Applicable for 800-1000mm wide and 8-12mm  
thick glass door, Door will be close automatically at  
approximately 25°  
Note: Glass must be toughened

● 镜光 / PSS ● 砂光 / SSS

**XJ-803**

180°长半圆玻璃浴室夹  
180° long semicircular glass  
bathroom Clamp



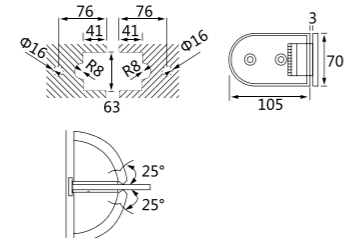
材质: 不锈钢 / 铜  
表面处理: 砂光 / 镜光  
承重: 45kg / 对  
适用于门宽 800-1000mm, 厚度 8-12mm 玻璃门安装,  
门关至约 25°时, 门会自关闭。  
注意: 玻璃必需钢化

Material: Stainless steel / Copper  
Finish: SSS / PSS  
Bearing weight: 45kg / Pair  
Applicable for 800-1000mm wide and 8-12mm  
thick glass door, Door will be close automatically at  
approximately 25°  
Note: Glass must be toughened

● 镜光 / PSS ● 砂光 / SSS

**XJ-804**

90°双页长半圆玻璃浴室夹  
90° double page long semicircular  
glass bathroom Clamp



材质: 不锈钢 / 铜  
表面处理: 砂光 / 镜光  
承重: 45kg / 对  
适用于门宽 800-1000mm, 厚度 8-12mm 玻璃门安装,  
门关至约 25°时, 门会自关闭。  
注意: 玻璃必需钢化

Material: Stainless steel / Copper  
Finish: SSS / PSS  
Bearing weight: 45kg / Pair  
Applicable for 800-1000mm wide and 8-12mm  
thick glass door, Door will be close automatically at  
approximately 25°  
Note: Glass must be toughened

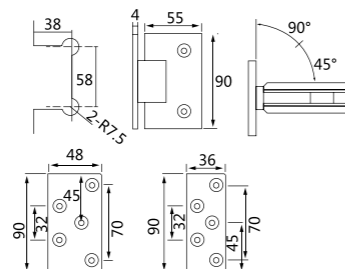
● 镜光 / PSS ● 砂光 / SSS





**XJ-2015A**

90°免开槽玻璃浴室夹  
90° free slotted glass bathroom clamp



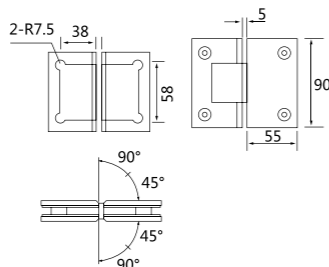
材质: 不锈钢 / 铜  
表面处理: 砂光 / 镜光  
承重: 45kg/对  
适用于门宽800-1000mm, 厚度8-12mm玻璃门安装,  
门关至约25°时, 门会自关闭。  
注意: 玻璃必需钢化

Material:Stainless steel/ Copper  
Firish:SSS/ PSS  
Bearing weight:45kg/Pair  
Applicable for 800-1000mm wide and 8-12mm  
thick glass door,Door will be close automatically at  
approximately 25°  
Note:Glass must be toughened

● 镜光 /PSS ● 砂光 /SSS

**XJ-2015B**

180°免开槽玻璃浴室夹  
180° free slotted glass bathroom clamp



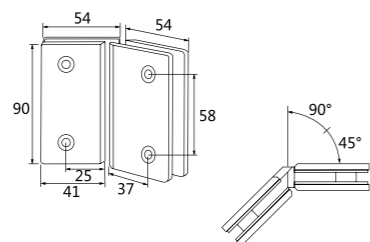
材质: 不锈钢 / 铜  
表面处理: 砂光 / 镜光  
承重: 45kg/对  
适用于门宽800-1000mm, 厚度8-12mm玻璃门安装,  
门关至约25°时, 门会自关闭。  
注意: 玻璃必需钢化

Material:Stainless steel/ Copper  
Firish:SSS/ PSS  
Bearing weight:45kg/Pair  
Applicable for 800-1000mm wide and 8-12mm  
thick glass door,Door will be close automatically at  
approximately 25°  
Note:Glass must be toughened

● 镜光 /PSS ● 砂光 /SSS

**XJ-2015C**

135°免开槽玻璃浴室夹  
135° free slotted glass bathroom clamp



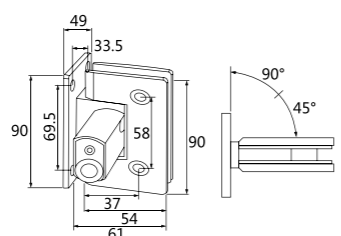
材质: 不锈钢 / 铜  
表面处理: 砂光 / 镜光  
承重: 45kg/对  
适用于门宽800-1000mm, 厚度8-12mm玻璃门安装,  
门关至约25°时, 门会自关闭。  
注意: 玻璃必需钢化

Material:Stainless steel/ Copper  
Firish:SSS/ PSS  
Bearing weight:45kg/Pair  
Applicable for 800-1000mm wide and 8-12mm  
thick glass door,Door will be close automatically at  
approximately 25°  
Note:Glass must be toughened

● 镜光 /PSS ● 砂光 /SSS

**XJ-2016A**

90°单开缓冲阻尼玻璃浴室夹  
90° Single open Hydraulic glass Clamp



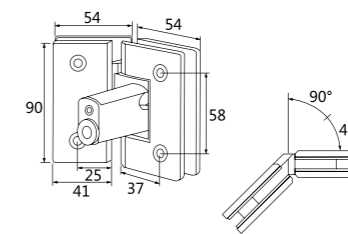
材质: SUS304 不锈钢  
表面处理: 砂光 / 镜光  
承重: 45kg/对  
适用于门宽800-1000mm, 厚度8-12mm玻璃门安装,  
门关至约60°时, 门会自关闭。  
注意: 玻璃必需钢化

Material:SUS304 Stainless steel  
Firish:SSS/ PSS  
Bearing weight:45kg/Pair  
Applicable for 800-1000mm wide and 8-12mm  
thick glass door,Door will be close automatically at  
approximately 60°  
Note:Glass must be toughened

● 镜光 /PSS ● 砂光 /SSS

**XJ-2016B**

135°单开缓冲阻尼玻璃浴室夹  
135° Single open Hydraulic glass Clamp



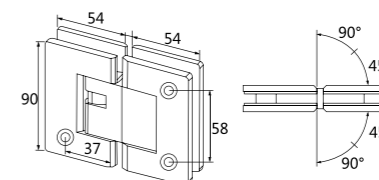
材质: SUS304 不锈钢  
表面处理: 砂光 / 镜光  
承重: 45kg/对  
适用于门宽800-1000mm, 厚度8-12mm玻璃门安装,  
门关至约60°时, 门会自关闭。  
注意: 玻璃必需钢化

Material:SUS304 Stainless steel  
Firish:SSS/ PSS  
Bearing weight:45kg/Pair  
Applicable for 800-1000mm wide and 8-12mm  
thick glass door,Door will be close automatically at  
approximately 60°  
Note:Glass must be toughened

● 镜光 /PSS ● 砂光 /SSS

**XJ-2016C**

180°双开缓冲阻尼玻璃浴室夹  
180° Double open Hydraulic glass Clamp



材质: SUS304 不锈钢  
表面处理: 砂光 / 镜光  
承重: 45kg/对  
适用于门宽800-1000mm, 厚度8-12mm玻璃门安装,  
门关至约60°时, 门会自关闭。  
注意: 玻璃必需钢化

Material:SUS304 Stainless steel  
Firish:SSS/ PSS  
Bearing weight:45kg/Pair  
Applicable for 800-1000mm wide and 8-12mm  
thick glass door,Door will be close automatically at  
approximately 60°  
Note:Glass must be toughened

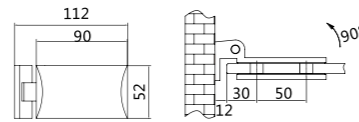
● 镜光 /PSS ● 砂光 /SSS





### XJ-03A

浴室合页  
Bathroom hinge

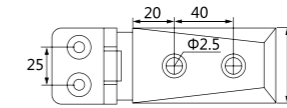


材质: 精铸 304 不锈钢  
表面处理: 光铬  
承重: 40kg  
适用于门宽 800-1000, 厚度 6-12mm 玻璃门  
  
Material: Investment Casting 304 stainless steel  
Finish: Chrome  
Bearing weight: 40kg  
Suitable for door width 800-1000, thickness 6-12mm glass door

● 光铬 / CP (Chrome Plated)

### XJ-01A

浴室合页  
Bathroom hinge

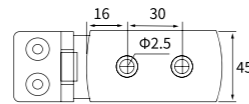


材质: 精铸 304 不锈钢  
表面处理: 光铬  
承重: 40kg  
适用于门宽 800-1000, 厚度 6-12mm 玻璃门  
  
Material: Investment Casting 304 stainless steel  
Finish: Chrome  
Bearing weight: 40kg  
Suitable for door width 800-1000, thickness 6-12mm glass door

● 光铬 / CP (Chrome Plated)

### XJ-03B

浴室合页  
Bathroom hinge

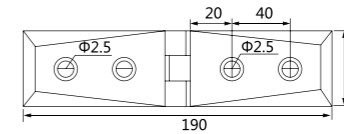


材质: 精铸 304 不锈钢  
表面处理: 光铬  
承重: 40kg  
适用于门宽 800-1000, 厚度 6-12mm 玻璃门  
  
Material: Investment Casting 304 stainless steel  
Finish: Chrome  
Bearing weight: 40kg  
Suitable for door width 800-1000, thickness 6-12mm glass door

● 光铬 / CP (Chrome Plated)

### XJ-01B

浴室合页  
Bathroom hinge

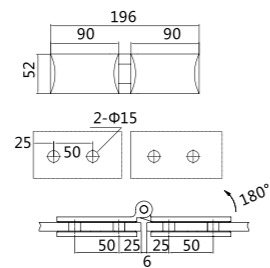


材质: 精铸 304 不锈钢  
表面处理: 光铬  
承重: 40kg  
适用于门宽 800-1000, 厚度 6-12mm 玻璃门  
  
Material: Investment Casting 304 stainless steel  
Finish: Chrome  
Bearing weight: 40kg  
Suitable for door width 800-1000, thickness 6-12mm glass door

● 光铬 / CP (Chrome Plated)

### XJ-03C

浴室合页  
Bathroom hinge

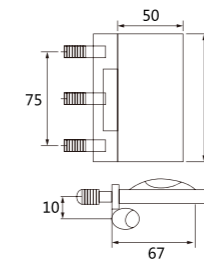


材质: 精铸 304 不锈钢  
表面处理: 光铬  
承重: 40kg  
适用于门宽 800-1000, 厚度 6-12mm 玻璃门  
  
Material: Investment Casting 304 stainless steel  
Finish: Chrome  
Bearing weight: 40kg  
Suitable for door width 800-1000, thickness 6-12mm glass door

● 光铬 / CP (Chrome Plated)

### XJ-11A

浴室合页  
Bathroom hinge

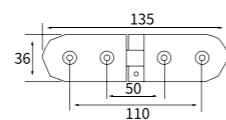


材质: 锌合金  
表面处理: 光铬  
承重: 40kg  
适用于门宽 800-1000, 厚度 6-12mm 玻璃门  
  
Material: Zinc alloy  
Finish: Chrome  
Bearing weight: 40kg  
Suitable for door width 800-1000, thickness 6-12mm glass door

● 光铬 / CP (Chrome Plated)

### XJ-04A

浴室合页  
Bathroom hinge

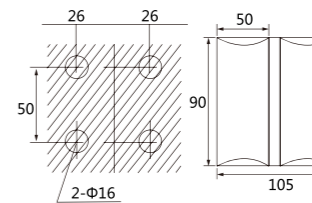


材质: 精铸 304 不锈钢  
表面处理: 光铬  
承重: 40kg  
适用于门宽 800-1000, 厚度 6-12mm 玻璃门  
  
Material: Investment Casting 304 stainless steel  
Finish: Chrome  
Bearing weight: 40kg  
Suitable for door width 800-1000, thickness 6-12mm glass door

● 光铬 / CP (Chrome Plated)

### XJ-11B

浴室合页  
Bathroom hinge



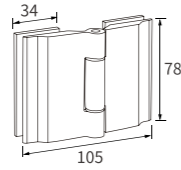
材质: 锌合金  
表面处理: 光铬  
承重: 40kg  
适用于门宽 800-1000, 厚度 6-12mm 玻璃门  
  
Material: Zinc alloy  
Finish: Chrome  
Bearing weight: 40kg  
Suitable for door width 800-1000, thickness 6-12mm glass door

● 光铬 / CP (Chrome Plated)



### XJ-11C

浴室合页  
Bathroom hinge

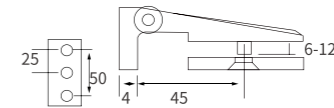


材质: 锌合金  
表面处理: 光铬  
承重: 40kg  
适用于门宽 800-1000, 厚度 6-12mm 玻璃门  
  
Material: Zinc alloy  
Finish: Chrome  
Bearing weight: 40kg  
Suitable for door width 800-1000, thickness 6-12mm glass door

● 光铬 / CP (Chrome Plated)

### XJ-06A

浴室合页  
Bathroom hinge

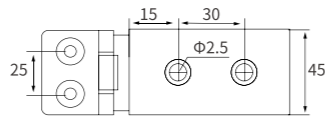


材质: 精铸 304 不锈钢  
表面处理: 光铬  
承重: 40kg  
适用于门宽 800-1000, 厚度 6-12mm 玻璃门  
  
Material: Investment Casting 304 stainless steel  
Finish: Chrome  
Bearing weight: 40kg  
Suitable for door width 800-1000, thickness 6-12mm glass door

● 光铬 / CP (Chrome Plated)

### XJ-05A

浴室合页  
Bathroom hinge

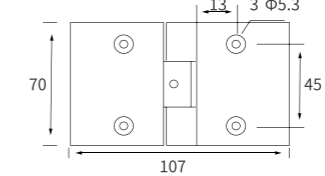


材质: 精铸 304 不锈钢  
表面处理: 光铬  
承重: 40kg  
适用于门宽 800-1000, 厚度 6-12mm 玻璃门  
  
Material: Investment Casting 304 stainless steel  
Finish: Chrome  
Bearing weight: 40kg  
Suitable for door width 800-1000, thickness 6-12mm glass door

● 光铬 / CP (Chrome Plated)

### XJ-06B

浴室合页  
Bathroom hinge

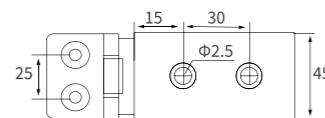


材质: 精铸 304 不锈钢  
表面处理: 光铬  
承重: 40kg  
适用于门宽 800-1000, 厚度 6-12mm 玻璃门  
  
Material: Investment Casting 304 stainless steel  
Finish: Chrome  
Bearing weight: 40kg  
Suitable for door width 800-1000, thickness 6-12mm glass door

● 光铬 / CP (Chrome Plated)

### XJ-05B

浴室合页  
Bathroom hinge

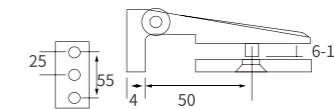


材质: 精铸 304 不锈钢  
表面处理: 光铬  
承重: 40kg  
适用于门宽 800-1000, 厚度 6-12mm 玻璃门  
  
Material: Investment Casting 304 stainless steel  
Finish: Chrome  
Bearing weight: 40kg  
Suitable for door width 800-1000, thickness 6-12mm glass door

● 光铬 / CP (Chrome Plated)

### XJ-07A

浴室合页  
Bathroom hinge

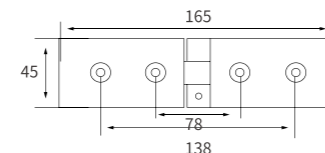


材质: 精铸 304 不锈钢  
表面处理: 光铬  
承重: 40kg  
适用于门宽 800-1000, 厚度 6-12mm 玻璃门  
  
Material: Investment Casting 304 stainless steel  
Finish: Chrome  
Bearing weight: 40kg  
Suitable for door width 800-1000, thickness 6-12mm glass door

● 光铬 / CP (Chrome Plated)

### XJ-05C

浴室合页  
Bathroom hinge

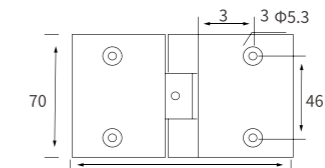


材质: 精铸 304 不锈钢  
表面处理: 光铬  
承重: 40kg  
适用于门宽 800-1000, 厚度 6-12mm 玻璃门  
  
Material: Investment Casting 304 stainless steel  
Finish: Chrome  
Bearing weight: 40kg  
Suitable for door width 800-1000, thickness 6-12mm glass door

● 光铬 / CP (Chrome Plated)

### XJ-07B

浴室合页  
Bathroom hinge



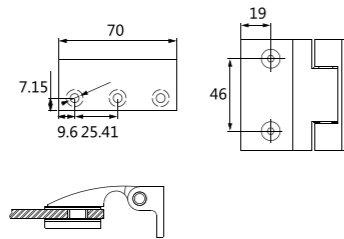
材质: 精铸 304 不锈钢  
表面处理: 光铬  
承重: 40kg  
适用于门宽 800-1000, 厚度 6-12mm 玻璃门  
  
Material: Investment Casting 304 stainless steel  
Finish: Chrome  
Bearing weight: 40kg  
Suitable for door width 800-1000, thickness 6-12mm glass door

● 光铬 / CP (Chrome Plated)



### XJ-08A

浴室合页  
Bathroom hinge

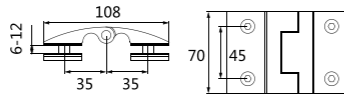


材质: 精铸 304 不锈钢  
表面处理: 光铬  
承重: 40kg  
适用于门宽 800-1000, 厚度 6-12mm 玻璃门  
  
Material: Investment Casting 304 stainless steel  
Finish: Chrome  
Bearing weight: 40kg  
Suitable for door width 800-1000, thickness 6-12mm glass door

● 光铬 / CP (Chrome Plated)

### XJ-08B

浴室合页  
Bathroom hinge

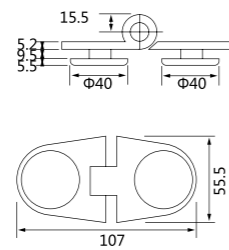


材质: 精铸 304 不锈钢  
表面处理: 光铬  
承重: 40kg  
适用于门宽 800-1000, 厚度 6-12mm 玻璃门  
  
Material: Investment Casting 304 stainless steel  
Finish: Chrome  
Bearing weight: 40kg  
Suitable for door width 800-1000, thickness 6-12mm glass door

● 光铬 / CP (Chrome Plated)

### XJ-09A

浴室合页  
Bathroom hinge

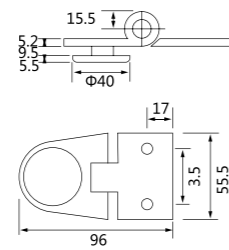


材质: 精铸 304 不锈钢  
表面处理: 光铬  
承重: 40kg  
适用于门宽 800-1000, 厚度 6-12mm 玻璃门  
  
Material: Investment Casting 304 stainless steel  
Finish: Chrome  
Bearing weight: 40kg  
Suitable for door width 800-1000, thickness 6-12mm glass door

● 光铬 / CP (Chrome Plated)

### XJ-09B

浴室合页  
Bathroom hinge

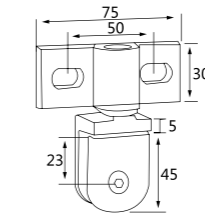


材质: 精铸 304 不锈钢  
表面处理: 光铬  
承重: 40kg  
适用于门宽 800-1000, 厚度 6-12mm 玻璃门  
  
Material: Investment Casting 304 stainless steel  
Finish: Chrome  
Bearing weight: 40kg  
Suitable for door width 800-1000, thickness 6-12mm glass door

● 光铬 / CP (Chrome Plated)

### XJ-10A

不锈钢吊夹  
Stainless steel hinge

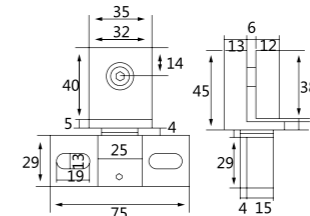


材质: 精铸 304 不锈钢  
表面处理: 光铬  
承重: 40kg  
适用于门宽 800-1000, 厚度 6-12mm 玻璃门  
  
Material: Investment Casting 304 stainless steel  
Finish: Chrome  
Bearing weight: 40kg  
Suitable for door width 800-1000, thickness 6-12mm glass door

● 光铬 / CP (Chrome Plated)

### XJ-10B

不锈钢吊夹  
Stainless steel hinge

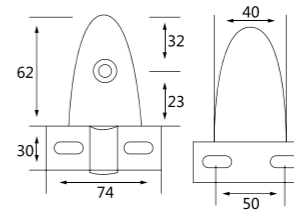


材质: 精铸 304 不锈钢  
表面处理: 光铬  
承重: 40kg  
适用于门宽 800-1000, 厚度 6-12mm 玻璃门  
  
Material: Investment Casting 304 stainless steel  
Finish: Chrome  
Bearing weight: 40kg  
Suitable for door width 800-1000, thickness 6-12mm glass door

● 光铬 / CP (Chrome Plated)

### XJ-10C

不锈钢吊夹  
Stainless steel hinge

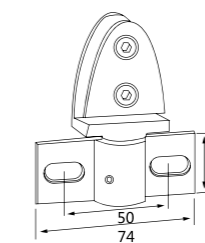


材质: 精铸 304 不锈钢  
表面处理: 光铬  
承重: 40kg  
适用于门宽 800-1000, 厚度 6-12mm 玻璃门  
  
Material: Investment Casting 304 stainless steel  
Finish: Chrome  
Bearing weight: 40kg  
Suitable for door width 800-1000, thickness 6-12mm glass door

● 光铬 / CP (Chrome Plated)

### XJ-10D

不锈钢吊夹  
Stainless steel hinge



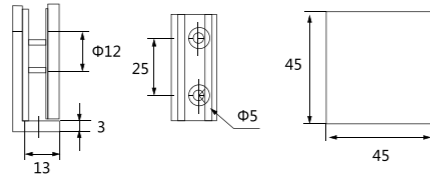
材质: 精铸 304 不锈钢  
表面处理: 光铬  
承重: 40kg  
适用于门宽 800-1000, 厚度 6-12mm 玻璃门  
  
Material: Investment Casting 304 stainless steel  
Finish: Chrome  
Bearing weight: 40kg  
Suitable for door width 800-1000, thickness 6-12mm glass door

● 光铬 / CP (Chrome Plated)



### XJ-061

方形精铸 0°固定夹  
Square investment casting 0° attaching clamp



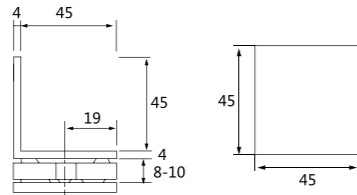
材质: 锌合金 / 不锈钢 / 铜  
颜色: 拉丝 / 镜光

Material: zinc alloy / stainless steel / copper  
Color: SSS / PSS

● 拉丝 /SSS ● 镜光 /PSS

### XJ-062

方形精铸 90°单边固定夹  
Square investment casting 90° single attaching clamp



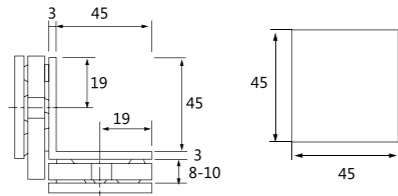
材质: 锌合金 / 不锈钢 / 铜  
颜色: 拉丝 / 镜光

Material: zinc alloy / stainless steel / copper  
Color: SSS / PSS

● 拉丝 /SSS ● 镜光 /PSS

### XJ-063

方形精铸 90°双边固定夹  
Square investment casting 90° double attaching clamp



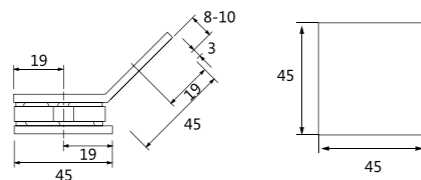
材质: 锌合金 / 不锈钢 / 铜  
颜色: 拉丝 / 镜光

Material: zinc alloy / stainless steel / copper  
Color: SSS / PSS

● 拉丝 /SSS ● 镜光 /PSS

### XJ-064

方形精铸 135°单边固定夹  
Square investment casting 135° single attaching clamp



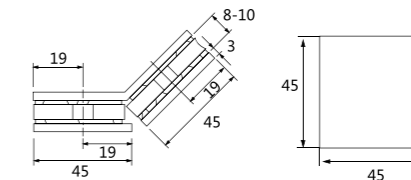
材质: 锌合金 / 不锈钢 / 铜  
颜色: 拉丝 / 镜光

Material: zinc alloy / stainless steel / copper  
Color: SSS / PSS

● 拉丝 /SSS ● 镜光 /PSS

### XJ-065

方形精铸 135°双边固定夹  
Square investment casting 135° double attaching clamp



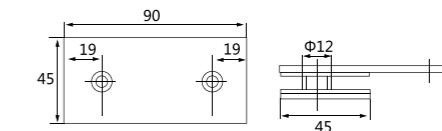
材质: 锌合金 / 不锈钢 / 铜  
颜色: 拉丝 / 镜光

Material: zinc alloy / stainless steel / copper  
Color: SSS / PSS

● 拉丝 /SSS ● 镜光 /PSS

### XJ-066

方形精铸 180°单边固定夹  
Square investment casting 180° single attaching clamp



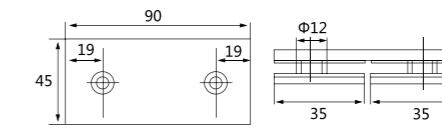
材质: 锌合金 / 不锈钢 / 铜  
颜色: 拉丝 / 镜光

Material: zinc alloy / stainless steel / copper  
Color: SSS / PSS

● 拉丝 /SSS ● 镜光 /PSS

### XJ-067

方形精铸 180°双边固定夹  
Square investment casting 180° double attaching clamp



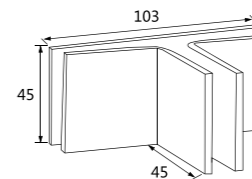
材质: 锌合金 / 不锈钢 / 铜  
颜色: 拉丝 / 镜光

Material: zinc alloy / stainless steel / copper  
Color: SSS / PSS

● 拉丝 /SSS ● 镜光 /PSS

### XJ-081B

长方形 T 形固定夹  
Rectangular t-shaped clamp



材质: 锌合金 / 不锈钢 / 铜  
颜色: 拉丝 / 镜光

Material: zinc alloy / stainless steel / copper  
Color: SSS / PSS

● 拉丝 /SSS ● 镜光 /PSS



# LIVING ARTWORK

专注 / 成就 / 典范

[www.xijiewj.com](http://www.xijiewj.com)

艺术只为创意与表达生活而存在。富有吸引力的视觉体现和简洁时尚线条的大气外观，硬与柔的完美铸就，如镀月光的时尚质感与精致的卓越工艺，是一种“全艺术精品”的真正诠释。

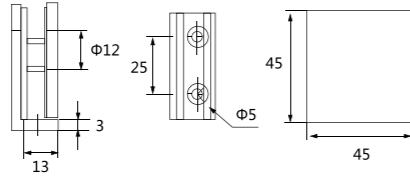
Art only exists for creativity and expression of life. Attractive visual expression and concise fashion lines of the appearance, hard and soft perfect cast, such as the moonlight fashion texture and exquisite craftsmanship, is a "full art Pnc" true interpretation.





### XJ-071B

方形斜边精铸 0°固定夹  
square chamfered orecurly casted 0°  
attaching clamp



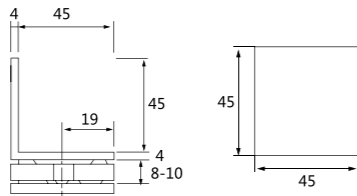
材质: 锌合金 / 不锈钢 / 铜  
颜色: 拉丝 / 镜光

Material: zinc alloy / stainless steel / copper  
Color: SSS / PSS

● 拉丝 /SSS ● 镜光 /PSS

### XJ-072

方形斜边精铸 90°单边固定夹  
square chamfered orecurly casted 90°  
single attaching clamp



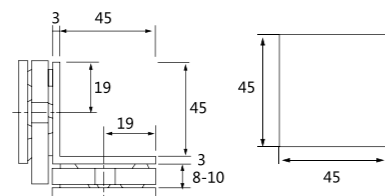
材质: 锌合金 / 不锈钢 / 铜  
颜色: 拉丝 / 镜光

Material: zinc alloy / stainless steel / copper  
Color: SSS / PSS

● 拉丝 /SSS ● 镜光 /PSS

### XJ-072B

方形斜边精铸 90°双边固定夹  
square chamfered orecurly casted 90°  
double attaching clamp



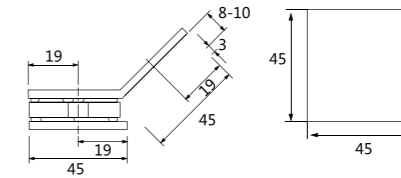
材质: 锌合金 / 不锈钢 / 铜  
颜色: 拉丝 / 镜光

Material: zinc alloy / stainless steel / copper  
Color: SSS / PSS

● 拉丝 /SSS ● 镜光 /PSS

### XJ-073

方形斜边精铸 135°单边固定夹  
square chamfered orecurly casted 90°  
single attaching clamp



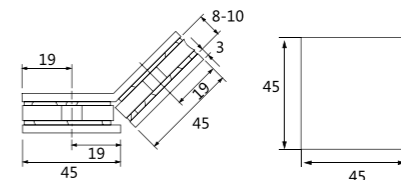
材质: 锌合金 / 不锈钢 / 铜  
颜色: 拉丝 / 镜光

Material: zinc alloy / stainless steel / copper  
Color: SSS / PSS

● 拉丝 /SSS ● 镜光 /PSS

### XJ-073B

方形斜边精铸 135°双边固定夹  
square chamfered orecurly casted  
135° double attaching clamp



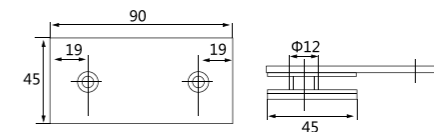
材质: 锌合金 / 不锈钢 / 铜  
颜色: 拉丝 / 镜光

Material: zinc alloy / stainless steel / copper  
Color: SSS / PSS

● 拉丝 /SSS ● 镜光 /PSS

### XJ-074

方形斜边精铸 180°单边固定夹  
square chamfered orecurly casted  
180° single attaching clamp



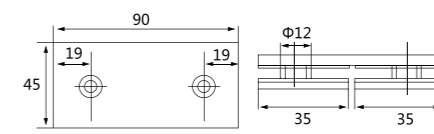
材质: 锌合金 / 不锈钢 / 铜  
颜色: 拉丝 / 镜光

Material: zinc alloy / stainless steel / copper  
Color: SSS / PSS

● 拉丝 /SSS ● 镜光 /PSS

### XJ-074B

方形斜边精铸 180°双边固定夹  
square chamfered orecurly casted  
180° double attaching clamp



材质: 锌合金 / 不锈钢 / 铜  
颜色: 拉丝 / 镜光

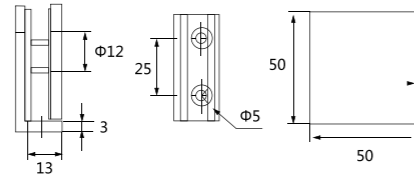
Material: zinc alloy / stainless steel / copper  
Color: SSS / PSS

● 拉丝 /SSS ● 镜光 /PSS



**XJ-081**

方形 (单孔) 0°固定夹  
square (single-prot)0° attaching clamp



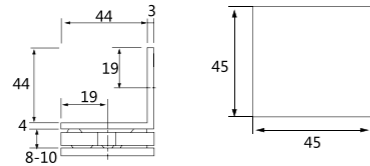
材质: 不锈钢  
颜色: 拉丝 / 镜光

Material: Stainless steel  
Color: SSS / PSS

● 拉丝 /SSS ● 镜光 /PSS

**XJ-082**

方形 90°单边固定夹  
square size 90° single attaching clamp



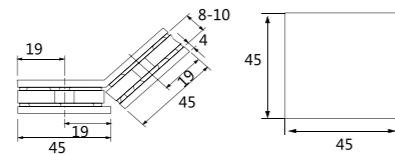
材质: 不锈钢  
颜色: 拉丝 / 镜光

Material: Stainless steel  
Color: SSS / PSS

● 拉丝 /SSS ● 镜光 /PSS

**XJ-082B**

方形 90°双边固定夹  
square size 90° double attaching clamp



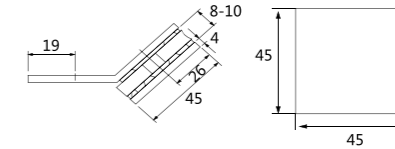
材质: 不锈钢  
颜色: 拉丝 / 镜光

Material: Stainless steel  
Color: SSS / PSS

● 拉丝 /SSS ● 镜光 /PSS

**XJ-083**

方形 135°单边固定夹  
square size 135° single attaching clamp



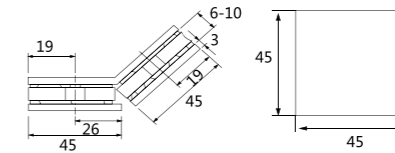
材质: 不锈钢  
颜色: 拉丝 / 镜光

Material: Stainless steel  
Color: SSS / PSS

● 拉丝 /SSS ● 镜光 /PSS

**XJ-083B**

方形 135°双边固定夹  
square size 135° double attaching clamp



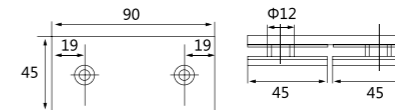
材质: 不锈钢  
颜色: 拉丝 / 镜光

Material: Stainless steel  
Color: SSS / PSS

● 拉丝 /SSS ● 镜光 /PSS

**XJ-084**

方形 180°单边固定夹  
square size 180° single attaching clamp



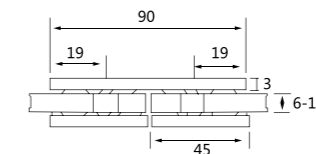
材质: 不锈钢  
颜色: 拉丝 / 镜光

Material: Stainless steel  
Color: SSS / PSS

● 拉丝 /SSS ● 镜光 /PSS

**XJ-084B**

方形 180°双边固定夹  
square size 180° double attaching clamp



材质: 不锈钢  
颜色: 拉丝 / 镜光

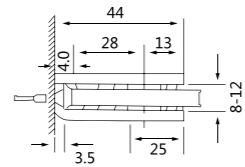
Material: Stainless steel  
Color: SSS / PSS

● 拉丝 /SSS ● 镜光 /PSS



### XJ-091

弧面方形精铸 0°固定夹  
Square square cast 0° fixed clamp



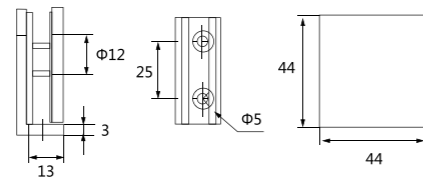
材质: 锌合金 / 不锈钢 / 铜  
颜色: 拉丝 / 镜光

Material: zinc alloy / stainless steel / copper  
Color: SSS / PSS

● 拉丝 /SSS ● 镜光 /PSS

### XJ-091B

弧面方形精铸 0°固定夹  
Square square cast 0° fixed clamp



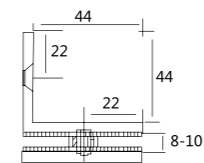
材质: 锌合金 / 不锈钢 / 铜  
颜色: 拉丝 / 镜光

Material: zinc alloy / stainless steel / copper  
Color: SSS / PSS

● 拉丝 /SSS ● 镜光 /PSS

### XJ-092

弧面方形精铸 90°单边固定夹  
Square square cast 90° single-sided fixed clamp



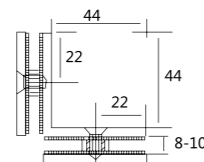
材质: 锌合金 / 不锈钢 / 铜  
颜色: 拉丝 / 镜光

Material: zinc alloy / stainless steel / copper  
Color: SSS / PSS

● 拉丝 /SSS ● 镜光 /PSS

### XJ-092B

弧面方形精铸 90°双边固定夹  
Square square cast 90° double fixed clamp



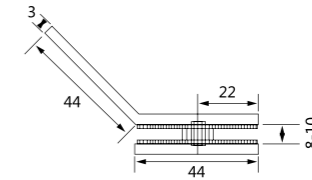
材质: 锌合金 / 不锈钢 / 铜  
颜色: 拉丝 / 镜光

Material: zinc alloy / stainless steel / copper  
Color: SSS / PSS

● 拉丝 /SSS ● 镜光 /PSS

### XJ-093

弧面方形精铸 135°单边固定夹  
Plane square cast 135° single side clamp



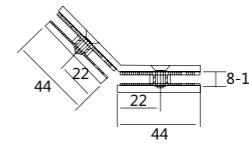
材质: 锌合金 / 不锈钢 / 铜  
颜色: 拉丝 / 镜光

Material: zinc alloy / stainless steel / copper  
Color: SSS / PSS

● 拉丝 /SSS ● 镜光 /PSS

### XJ-093B

弧面方形精铸 135°双边固定夹  
Curved square cast 135° double fixed clamp



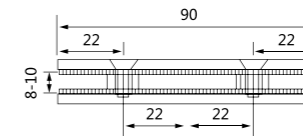
材质: 锌合金 / 不锈钢 / 铜  
颜色: 拉丝 / 镜光

Material: zinc alloy / stainless steel / copper  
Color: SSS / PSS

● 拉丝 /SSS ● 镜光 /PSS

### XJ-094

弧面方形精铸 180°单边固定夹  
Curved square cast 180° single side clamp



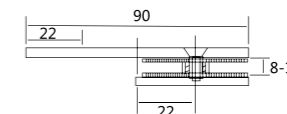
材质: 锌合金 / 不锈钢 / 铜  
颜色: 拉丝 / 镜光

Material: zinc alloy / stainless steel / copper  
Color: SSS / PSS

● 拉丝 /SSS ● 镜光 /PSS

### XJ-094B

弧面方形精铸 180°双边固定夹  
Curved square cast 180° double fixed clamp



材质: 锌合金 / 不锈钢 / 铜  
颜色: 拉丝 / 镜光

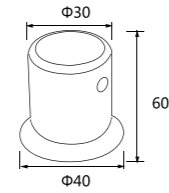
Material: zinc alloy / stainless steel / copper  
Color: SSS / PSS

● 拉丝 /SSS ● 镜光 /PSS



### XJ-228A

玻璃连接件系列  
Glass fittings



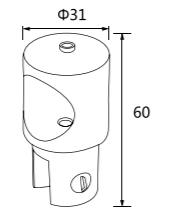
材质: 不锈钢 / 锌合金 / 铜  
表面处理: 拉丝 / 镜光

Material: Stainless steel/Zinc alloy/Copper  
Finish: SSS / PSS

● 镜光 / PSS    ● 拉丝 / SSS

### XJ-229A

玻璃连接件系列  
Glass fittings



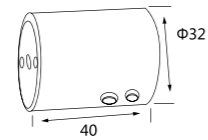
材质: 不锈钢 / 锌合金 / 铜  
表面处理: 拉丝 / 镜光

Material: Stainless steel/Zinc alloy/Copper  
Finish: SSS / PSS

● 镜光 / PSS    ● 拉丝 / SSS

### XJ-230A

玻璃连接件系列  
Glass fittings



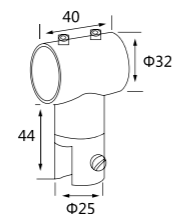
材质: 不锈钢  
表面处理: 拉丝 / 镜光

Material: Stainless steel  
Finish: SSS / PSS

● 镜光 / PSS    ● 拉丝 / SSS

### XJ-231A

玻璃连接件系列  
Glass fittings



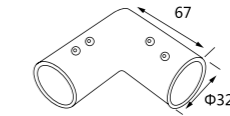
材质: 不锈钢  
表面处理: 拉丝 / 镜光

Material: Stainless steel  
Finish: SSS / PSS

● 镜光 / PSS    ● 拉丝 / SSS

### XJ-232

玻璃连接件系列  
Glass fittings



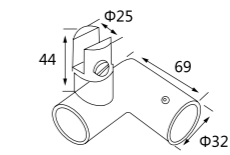
材质: 不锈钢  
表面处理: 拉丝 / 镜光

Material: Stainless steel  
Finish: SSS / PSS

● 镜光 / PSS    ● 拉丝 / SSS

### XJ-232A

玻璃连接件系列  
Glass fittings



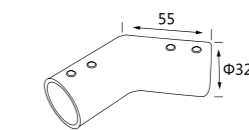
材质: 不锈钢  
表面处理: 拉丝 / 镜光

Material: Stainless steel  
Finish: SSS / PSS

● 镜光 / PSS    ● 拉丝 / SSS

### XJ-233

玻璃连接件系列  
Glass fittings



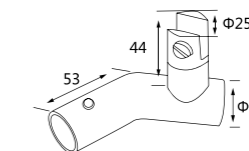
材质: 不锈钢  
表面处理: 拉丝 / 镜光

Material: Stainless steel  
Finish: SSS / PSS

● 镜光 / PSS    ● 拉丝 / SSS

### XJ-233A

玻璃连接件系列  
Glass fittings



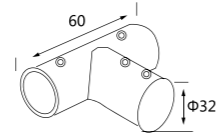
材质: 不锈钢  
表面处理: 拉丝 / 镜光

Material: Stainless steel  
Finish: SSS / PSS

● 镜光 / PSS    ● 拉丝 / SSS

### XJ-234

玻璃连接件系列  
Glass fittings

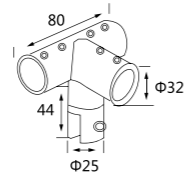


材质: 不锈钢  
表面处理: 拉丝 / 镜光  
Material: Stainless steel  
Finish: SSS / PSS

● 镜光 / PSS ● 拉丝 / SSS

### XJ-234A

玻璃连接件系列  
Glass fittings

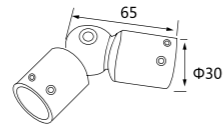


材质: 不锈钢  
表面处理: 拉丝 / 镜光  
Material: Stainless steel  
Finish: SSS / PSS

● 镜光 / PSS ● 拉丝 / SSS

### XJ-240A

玻璃连接件系列  
Glass fittings

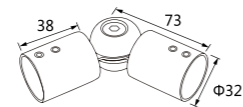


材质: 不锈钢 / 锌合金 / 铜  
表面处理: 拉丝 / 镜光  
Material: Stainless steel / Zinc alloy / Copper  
Finish: SSS / PSS

● 镜光 / PSS ● 拉丝 / SSS

### XJ-240B

玻璃连接件系列  
Glass fittings

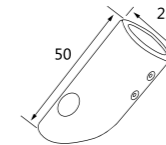


材质: 不锈钢  
表面处理: 拉丝 / 镜光  
Material: Stainless steel  
Finish: SSS / PSS

● 镜光 / PSS ● 拉丝 / SSS

### XJ-237

玻璃连接件系列  
Glass fittings

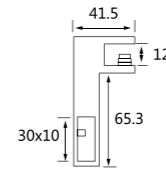


材质: 锌合金 / 不锈钢  
表面处理: 拉丝 / 镜光  
Material: zinc alloy / stainless steel  
Finish: SSS / PSS

● 镜光 / PSS ● 拉丝 / SSS

### XJ-241

玻璃连接件系列  
Glass fittings

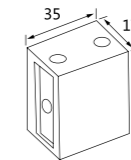


材质: 304#  
表面处理: 拉丝 / 镜光  
Material: 304#  
Finish: SSS / PSS

● 镜光 / PSS ● 拉丝 / SSS

### XJ-241A

玻璃连接件系列  
Glass fittings

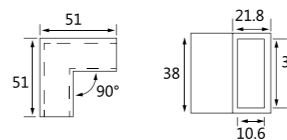


材质: 304#  
表面处理: 拉丝 / 镜光  
Material: 304#  
Finish: SSS / PSS

● 镜光 / PSS ● 拉丝 / SSS

### XJ-242

玻璃连接件系列  
Glass fittings



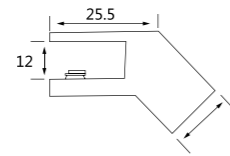
材质: 304#  
表面处理: 拉丝 / 镜光  
Material: 304#  
Finish: SSS / PSS

● 镜光 / PSS ● 砂光 / SSS



### XJ-243

玻璃连接件系列  
Glass fittings

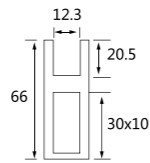


材质: 304#  
表面处理: 拉丝 / 镜光  
Material:304#  
Firish:SSS/ PSS

● 镜光 /PSS ● 砂光 /SSS

### XJ-244

玻璃连接件系列  
Glass fittings

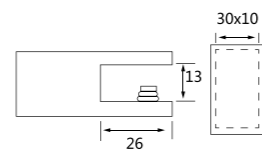


材质: 304#  
表面处理: 拉丝 / 镜光  
Material:304#  
Firish:SSS/ PSS

● 镜光 /PSS ● 砂光 /SSS

### XJ-245

玻璃连接件系列  
Glass fittings

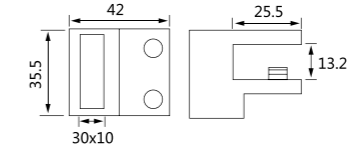


材质: 304#  
表面处理: 拉丝 / 镜光  
Material:304#  
Firish:SSS/ PSS

● 镜光 /PSS ● 砂光 /SSS

### XJ-246

玻璃连接件系列  
Glass fittings

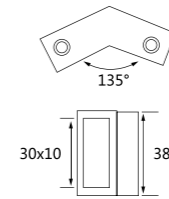


材质: 304#  
表面处理: 拉丝 / 镜光  
Material:304#  
Firish:SSS/ PSS

● 镜光 /PSS ● 拉丝 /SSS

### XJ-247

玻璃连接件系列  
Glass fittings

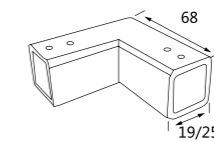


材质: 304#  
表面处理: 拉丝 / 镜光  
Material:304#  
Firish:SSS/ PSS

● 镜光 /PSS ● 拉丝 /SSS

### XJ-248

玻璃连接件系列  
Glass fittings

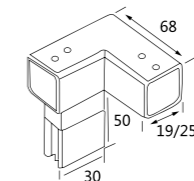


材质: 不锈钢  
表面处理: 拉丝 / 镜光  
Material: Stainless steel  
Finish: SSS / PSS

● 镜光 /PSS ● 拉丝 /SSS

### XJ-249

玻璃连接件系列  
Glass fittings



材质: 不锈钢  
表面处理: 拉丝 / 镜光  
Material: Stainless steel  
Finish: SSS / PSS

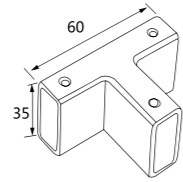
● 镜光 /PSS ● 拉丝 /SSS





**XJ-264**

玻璃连接件系列  
Glass fittings



材质: 不锈钢

表面处理: 拉丝 / 镜光

Material:Stainless steel

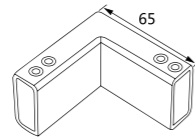
Finish:SSS/ PSS

● 镜光 /PSS    ● 拉丝 /SSS



**XJ-266**

玻璃连接件系列  
Glass fittings



材质: 不锈钢

表面处理: 拉丝 / 镜光

Material:Stainless steel

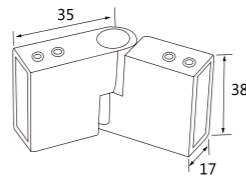
Finish:SSS/ PSS

● 镜光 /PSS    ● 砂光 /SSS



**XJ-267**

玻璃连接件系列  
Glass fittings



材质: 304#

表面处理: 拉丝 / 镜光

Material:304#

Finish:SSS/ PSS

● 镜光 /PSS    ● 砂光 /SSS





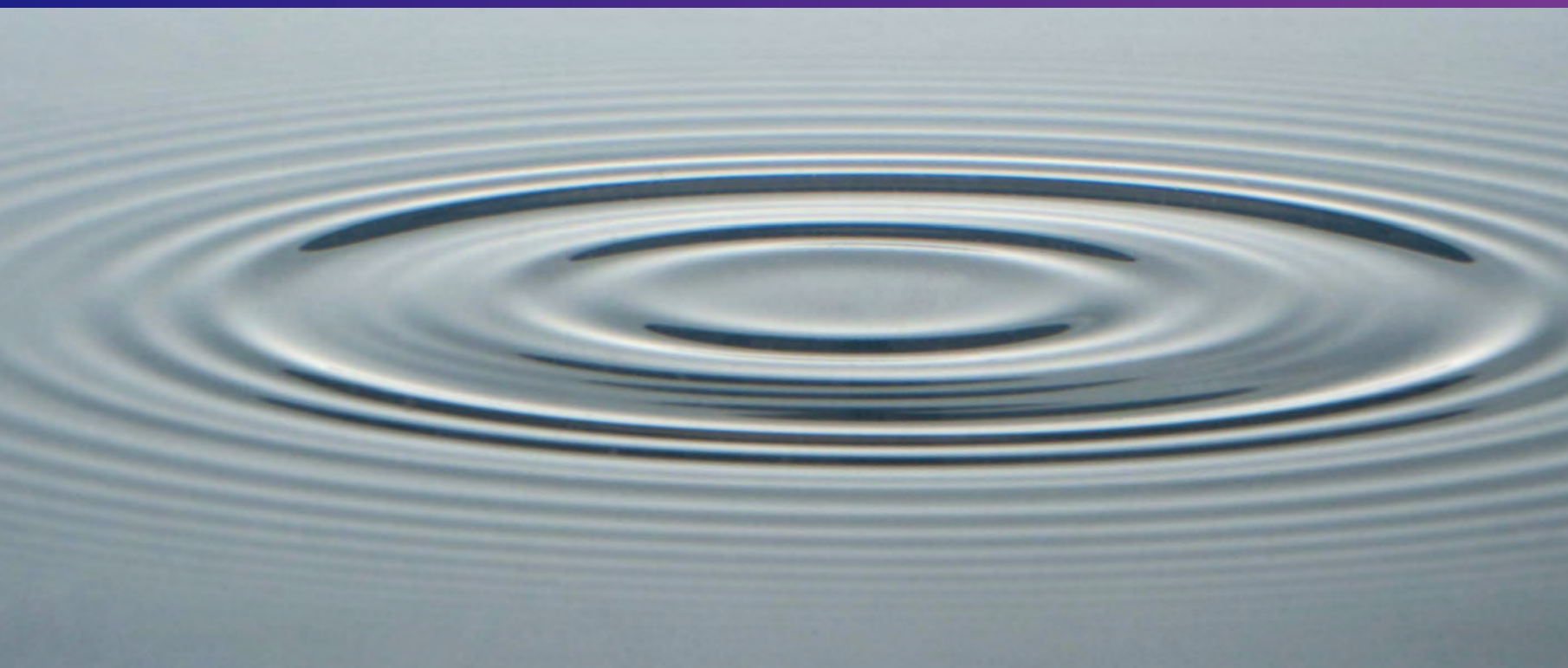
# NATURAL FASHION SENSE

匠心独运，典藏尊贵，内敛的奢华，艺术与生活的完美结合，希洁卫浴以贯彻不渝的精品要求选用制造主材，打造完美的卫浴空间。

有一份舒适，在每一细节交织的缝隙中，静静流淌，卫浴的舒适，源自于主人的亲情关爱。生活是为了自在舒适，为了找回源头活水，它不是路线之争，更非内容上的本位主义，自然时尚的感觉只有您最先知道。

Ingenuity, collection of noble, restrained luxury, the perfect combination of art and life, XIJIE bathroom to implement the unqualified boutique requirements of the manufacture of the main material, to create the perfect bathroom space.

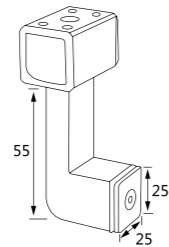
There is a comfortable, in every detail of the gap in the intertwined, quietly flowing, bathroom comfort, from the owner of the family love. Life is to be comfortable and comfortable, in order to get back to the source of living water, it is not the line of the dispute, more non-content on the localism, natural fashion feeling only you Prst know.





### XJ-258

玻璃连接件系列  
Glass fittings



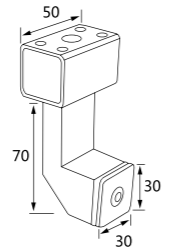
材质: 不锈钢  
表面处理: 拉丝 / 镜光  
Material: Stainless steel  
Finish: SSS/ PSS

● 镜光 / PSS ● 砂光 / SSS



### XJ-259

玻璃连接件系列  
Glass fittings



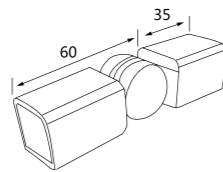
材质: 不锈钢  
表面处理: 拉丝 / 镜光  
Material: Stainless steel  
Finish: SSS/ PSS

● 镜光 / PSS ● 砂光 / SSS



### XJ-260

玻璃连接件系列  
Glass fittings



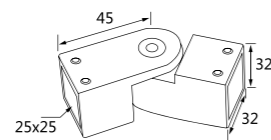
材质: 不锈钢  
表面处理: 拉丝 / 镜光  
Material: Stainless steel  
Finish: SSS/ PSS

● 镜光 / PSS ● 砂光 / SSS



### XJ-261

玻璃连接件系列  
Glass fittings



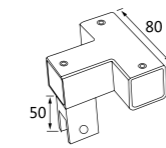
材质: 304#  
表面处理: 拉丝 / 镜光  
Material: 304#  
Finish: SSS/ PSS

● 镜光 / PSS ● 砂光 / SSS



### XJ-250

玻璃连接件系列  
Glass fittings



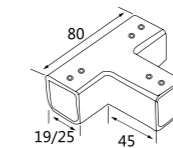
材质: 不锈钢  
表面处理: 拉丝 / 镜光  
Material: Stainless steel  
Finish: SSS/ PSS

● 镜光 / PSS ● 砂光 / SSS



### XJ-254B

玻璃连接件系列  
Glass fittings



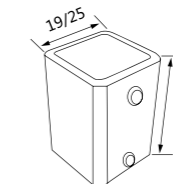
材质: 不锈钢  
表面处理: 拉丝 / 镜光  
Material: Stainless steel  
Finish: SSS/ PSS

● 镜光 / PSS ● 砂光 / SSS



### XJ-255

玻璃连接件系列  
Glass fittings



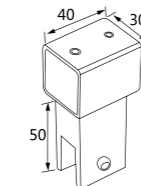
材质: 不锈钢  
表面处理: 拉丝 / 镜光  
Material: Stainless steel  
Finish: SSS/ PSS

● 镜光 / PSS ● 砂光 / SSS



### XJ-256

玻璃连接件系列  
Glass fittings



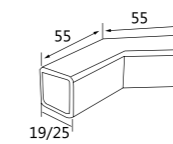
材质: 不锈钢  
表面处理: 拉丝 / 镜光  
Material: Stainless steel  
Finish: SSS/ PSS

● 镜光 / PSS ● 砂光 / SSS



### XJ-257

玻璃连接件系列  
Glass fittings



材质: 不锈钢  
表面处理: 拉丝 / 镜光  
Material: Stainless steel  
Finish: SSS/ PSS

● 镜光 / PSS ● 砂光 / SSS





BATHROOM  
HANDLE SERIES

## 浴室拉手 系列

有一份舒适, 在每一细节交织的罅隙中, 静静流淌,  
卫浴的舒适, 源自于主人的亲情关爱。

There was a comfort, in the interwoven gaps of every detail,  
The comfort of wei yu, originated from the family affection of the host.

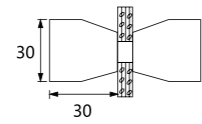






**XJ-064**

浴室小拉手系列  
Bathroom handle series



材质: 不锈钢 / 铜 / 铝 / 锌合金  
表面处理: 镜光 / 砂光

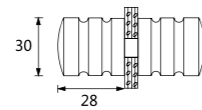
Material: Stainless steel / Copper  
Aluminum/Zinc alloy  
Finish: PSS/ SSS

● 镜光 / PSS    ● 砂光 / SSS



**XJ-061**

浴室小拉手系列  
Bathroom handle series



材质: 不锈钢 / 铜 / 铝 / 锌合金  
表面处理: 镜光 / 砂光

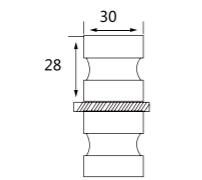
Material: Stainless steel / Copper  
Aluminum/Zinc alloy  
Finish: PSS/ SSS

● 镜光 / PSS    ● 砂光 / SSS



**XJ-062**

浴室小拉手系列  
Bathroom handle series



材质: 不锈钢 / 铜 / 铝 / 锌合金  
表面处理: 镜光 / 砂光

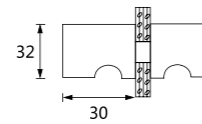
Material: Stainless steel / Copper  
Aluminum/Zinc alloy  
Finish: PSS/ SSS

● 镜光 / PSS    ● 砂光 / SSS



**XJ-063**

浴室小拉手系列  
Bathroom handle series



材质: 不锈钢 / 铜 / 铝 / 锌合金  
表面处理: 镜光 / 砂光

Material: Stainless steel / Copper  
Aluminum/Zinc alloy  
Finish: PSS/ SSS

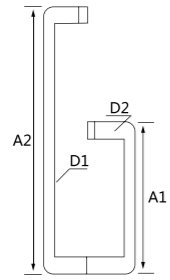
● 镜光 / PSS    ● 砂光 / SSS





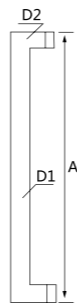
**XJ-L002**

方管拉手系列  
Shake handshandle series



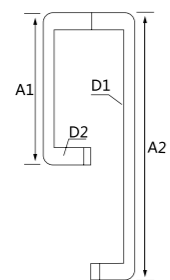
**XJ-L003**

方管拉手系列  
Shake handshandle series



**XJ-L004**

方管拉手系列  
Shake handshandle series



**XJ-L005**

方管拉手系列  
Shake handshandle series







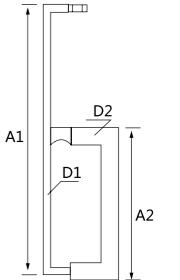
**XJ-L006**

方管拉手系列  
Shake handhandle series



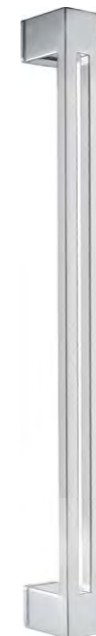
**XJ-L101**

方管拉手系列  
Shake handhandle series



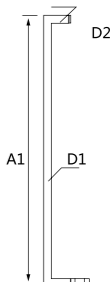
**XJ-L102**

方管拉手系列  
Shake handhandle series



**XJ-L103**

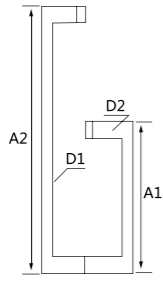
方管拉手系列  
Shake handhandle series





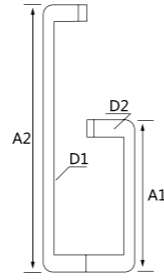
**XJ-L008**

方管拉手系列  
Shake handshandle series



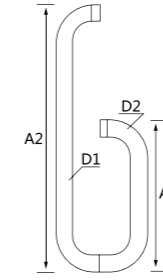
**XJ-L010**

方管拉手系列  
Shake handshandle series



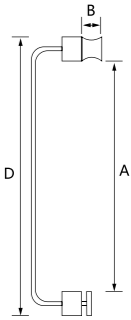
**XJ-L104**

圆管拉手系列  
Shake handshandle series



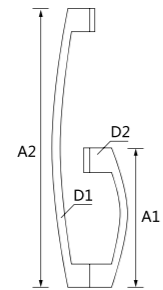
**XJ-L108**

扁管拉手系列  
Shake handshandle series



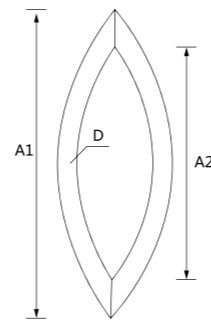
**XJ-L105**

方管拉手系列  
Shake handshandle series



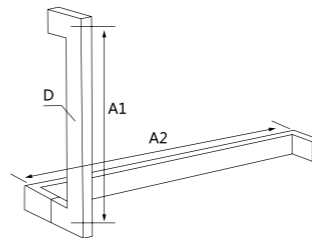
**XJ-L106**

方管拉手系列  
Shake handshandle series



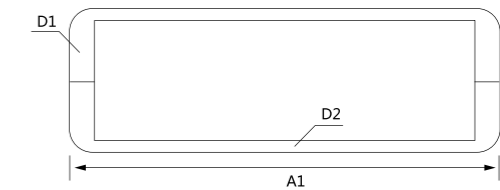
**XJ-L009**

方管拉手系列  
Shake handshandle series



**XJ-L109**

方管拉手系列  
Shake handshandle series







BATHROOM  
HANGER SERIES

## 卫浴挂件 系列

没有令人炫目的色彩，流露的却是一种淡定从容。  
源于时尚的自然肌理，仿若堕入一帘幽梦。

There is no dazzling color, but a kind of detachment.  
It comes from the natural texture of fashion, if you fall into a curtain.

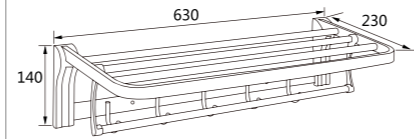




**XJY-001**

毛巾架  
Towel Rack

材质: 不锈钢 / 铜  
表面处理: 镜光 / 砂光  
Material: stainless steel / copper  
Finish: PSS/ SSS



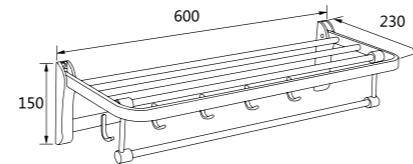
● 拉丝 /SSS ● 镜光 /PSS



**XJY-002**

毛巾架  
Towel Rack

材质: 不锈钢 / 铜  
表面处理: 镜光 / 砂光  
Material: stainless steel / copper  
Finish: PSS/ SSS



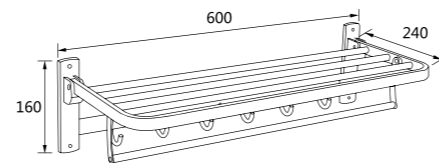
● 拉丝 /SSS ● 镜光 /PSS



**XJY-003**

毛巾架  
Towel Rack

材质: 不锈钢 / 铜  
表面处理: 镜光 / 砂光  
Material: stainless steel / copper  
Finish: PSS/ SSS



● 拉丝 /SSS ● 镜光 /PSS



**COURAGE AND ENERGY**

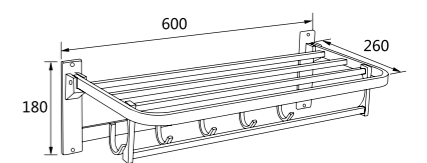
Enjoy exclusively the dignity and quality, let art melt into your life, appreciate the art and life, elegance and uniqueness are demonstrated in very detail.



**XJY-004**

毛巾架  
Towel Rack

材质: 不锈钢 / 铜  
表面处理: 镜光 / 砂光  
Material: stainless steel / copper  
Finish: PSS/ SSS

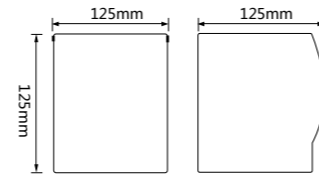


● 拉丝 /SSS ● 镜光 /PSS

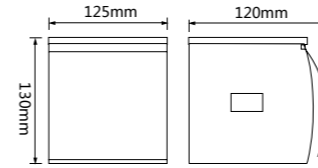




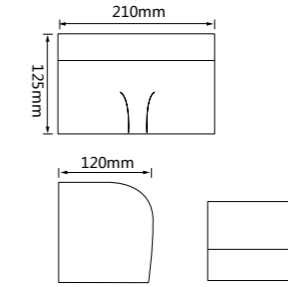
**XJA-332**  
8K 封底防水纸盒  
8k bottom sealed waterproof tray



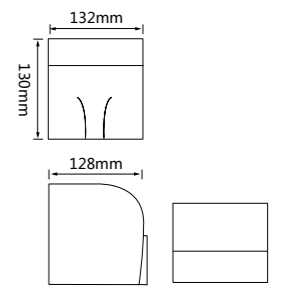
**XJB-335**  
8K 含烟灰纸盒  
8k with ash tray



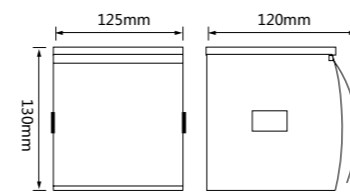
**XJBA-333**  
纸巾盒  
Tissue rack



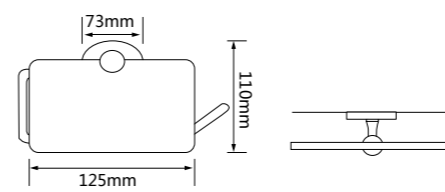
**XJA-333**  
纸巾盒  
Tissue rack



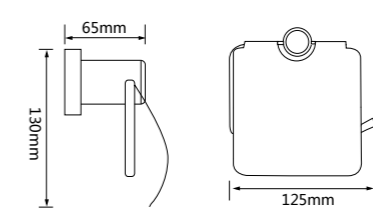
**XJA-335**  
8K 含烟灰纸盒  
8k with ash tray



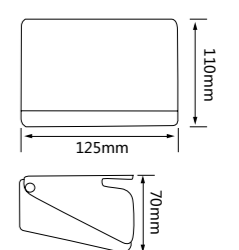
**XJA-36**  
纸巾架  
Tissue rack



**XJA-37**  
纸巾架  
Tissue rack



**XJA-35**  
纸巾盒  
Tissue rack





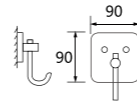
# FASHION STYLE

点线面优雅呈现，生活经典写意。  
简约设计的同时，保证功能完备实用，且又不乏时尚格调

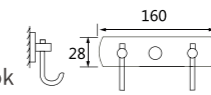
The point shows elegant, classic and comfortable life.  
Simple design at the same time, to ensure complete and practical functions,  
and there is no lack of fashion style



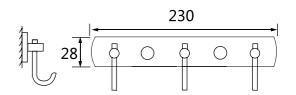
**XJK-321**  
衣钩 / Robe Hook



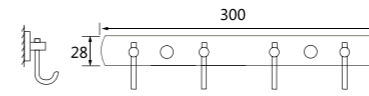
**XJK-322**  
衣钩 / Robe Hook



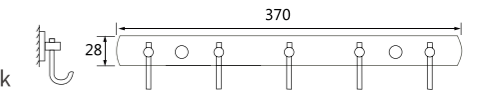
**XJK-323**  
衣钩 / Robe Hook



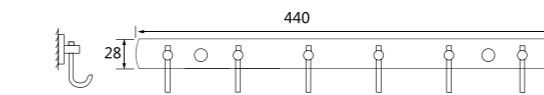
**XJK-324**  
衣钩 / Robe Hook



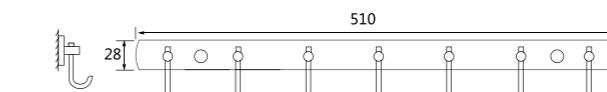
**XJK-325**  
衣钩 / Robe Hook



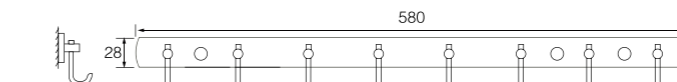
**XJK-326**  
衣钩 / Robe Hook



**XJK-327**  
衣钩 / Robe Hook



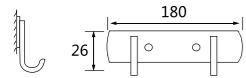
**XJK-328**  
衣钩 / Robe Hook



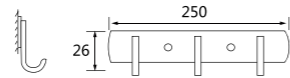




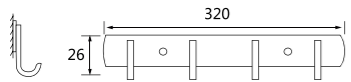
**XJK-803**  
衣钩 / Robe Hook



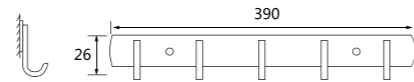
**XJK-804**  
衣钩 / Robe Hook



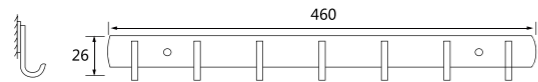
**XJK-805**  
衣钩 / Robe Hook



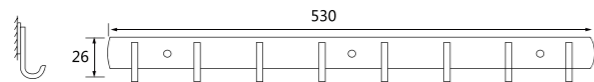
**XJK-806**  
衣钩 / Robe Hook



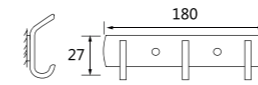
**XJK-807**  
衣钩 / Robe Hook



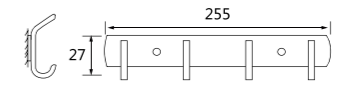
**XJK-808**  
衣钩 / Robe Hook



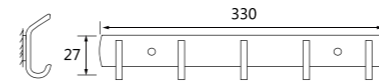
**XJK-803**  
衣钩 / Robe Hook



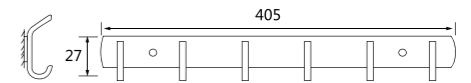
**XJK-804**  
衣钩 / Robe Hook



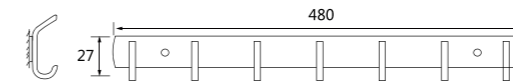
**XJK-805**  
衣钩 / Robe Hook



**XJK-806**  
衣钩 / Robe Hook



**XJK-807**  
衣钩 / Robe Hook



**XJK-808**  
衣钩 / Robe Hook

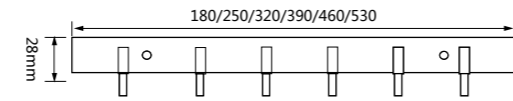






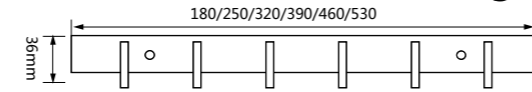
**XJE-113**

衣钩 / Robe Hook



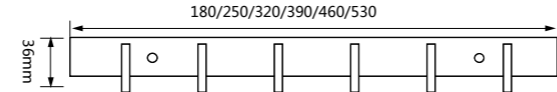
**XJE-903**

衣钩 / Robe Hoo



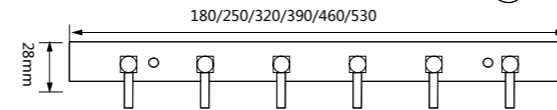
**XJE-803**

衣钩 / Robe Hook



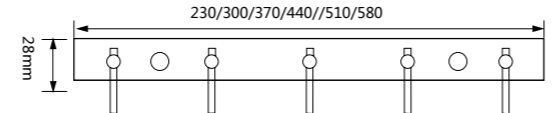
**XJE-263**

衣钩 / Robe Hook



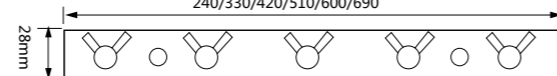
**XJE-323**

衣钩  
Robe Hook



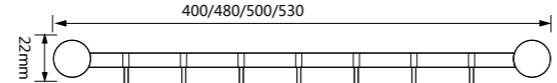
**XJE-883**

衣钩  
Robe Hook

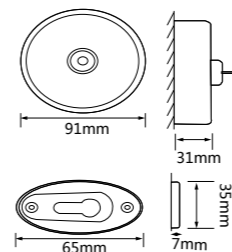


**XJE-507**

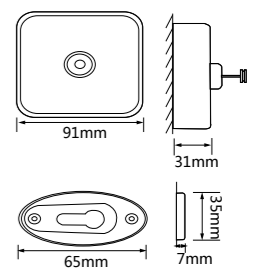
活动衣钩  
Mobile hook



**XJF-12**  
圆形绳钟  
Round rope bell



**XJF-13**  
方形绳钟  
Square rope bell







GLASS DOOR  
CLAMP SERIES

## 玻璃门夹 系列

不断创新的研发技术, 精益求精的制造工艺, 以及别出心裁、无微不至的细节构想, 触动人们对完美生活的向往。

Innovative research and development techniques, refined manufacturing techniques, and inventive and meticulous details have touched people's yearning for a perfect life.

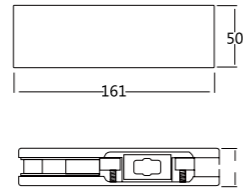






### XJM-010

上夹  
Upper Clamp



适用于 10-12mm 玻璃厚度，备有不同规格的上夹套，可与不同型号的地弹簧配合使用

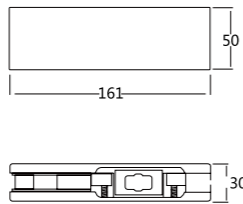
Suitable for 10-12mm glass thickness, provided with Upper jackets of different specification are available, can be used with floor springs of different types and models.

● 拉丝 /SSS ● 镜光 /PSS



### XJM-020

下夹  
Under Clamp



适用于 10-12mm 玻璃厚度，备有不同规格的曲夹套，可与不同型号的地弹簧配合使用

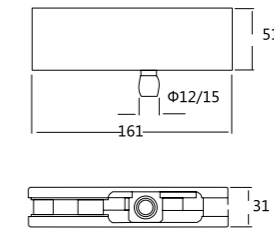
Suitable for 10-12mm glass thickness, provided with Bent jackets of different specification are available, can be used with floor springs of different types and models.

● 拉丝 /SSS ● 镜光 /PSS



### XJM-040

顶夹  
Top Clamp



适用于 10-12mm 玻璃厚度，备有不同规格的下夹套，可与不同型号的地弹簧配合使用。

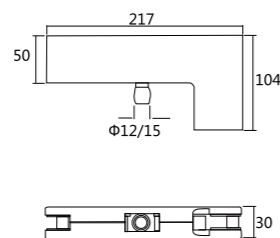
Suitable for 10-12mm glass thickness, provided with lower jackets of different specifications, can be used with floor springs of different types and models.

● 拉丝 /SSS ● 镜光 /PSS



### XJM-030

曲夹  
Curved Clamp



适用于 10-12mm 玻璃厚度，备有不同规格的曲夹轴，可与不同型号的地弹簧配合使用

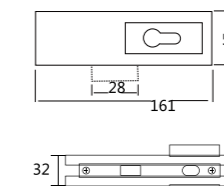
Suitable for 10-12mm glass thickness, provided with Bent clamping shafts of different specification are available, can be used with floor springs of different types and models.

● 拉丝 /SSS ● 镜光 /PSS



### XJM-050

锁夹  
Lock Clamp



适用于 10-12mm 玻璃厚度，单行程方舌，可安装玻璃门顶部、底部或侧面

Suitable for 10-12mm glass thickness, single-stroke square tongue, can be installed on the top, bottom or side of glass doors

● 拉丝 /SSS ● 镜光 /PSS



CONCEALED  
FLOOR SPRING

隐藏式地弹簧  
系列

适用于 10-12mm 玻璃门  
Suitable for 10-12mm glass door



**XJD-001**

隐藏式地弹簧  
Concealed floor spring

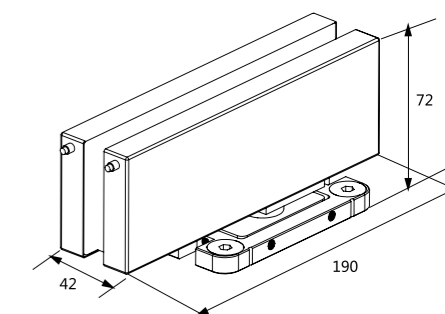
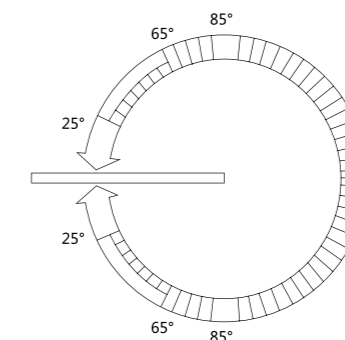
材质: 不锈钢  
Material: Stainless steel  
表面处理: 砂光 / 镜光  
Finish: SSS/PSS

最大门宽: ≤ 950mm  
Max. door wide: ≤ 950mm  
最大承重: 60-90kg  
Max. load: 60-90kg

关门范围: 25° -0° (以阀门螺丝 2 调节)  
关门范围: 65° -25° (以阀门螺丝 1 调节)  
关门范围: 85° -65° (不可调节)  
最大开幅: 180°  
Closing Speed adjustable: 25° -0° (Screw 2#)  
Closing Speed adjustable: 65° -25° (Screw 1#)  
Closing Speed adjustable: 85° -65° (Nonadjustable)  
Hold-open: 90° -180° (option)  
Max open: 180°



特性: 中心臂双向开启型, 90°止动装置, 两段速度调整, 全方位可调型  
Feature: Center huang, Double action, With 90° stop-device, 2 section speed adjustment valve, Position adjustable







CONNECTORS INTEGRATED  
SOLUTION

## 连接件组合 方案

认为万物之灵，既要顺应自然亦要以人为本，适合是最美的。  
人为空间的主宰，空间的设计因人而异。

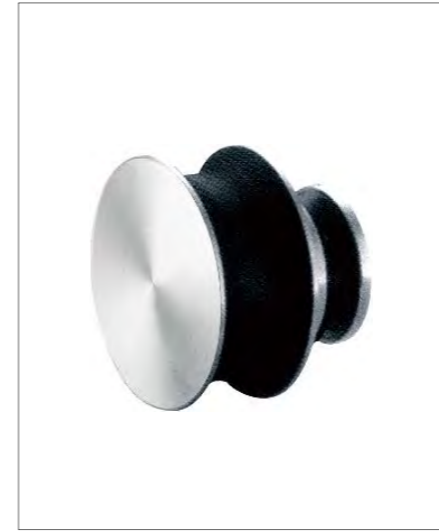
To think of the spirit of all things, to conform to nature as well as to be people-oriented, suitable for the most beautiful.  
The master of human space, the design of space varies from person to person.







# A001



A001-1

标准配置 Standard application



A001-2

A001-3

A001-4

A001-5



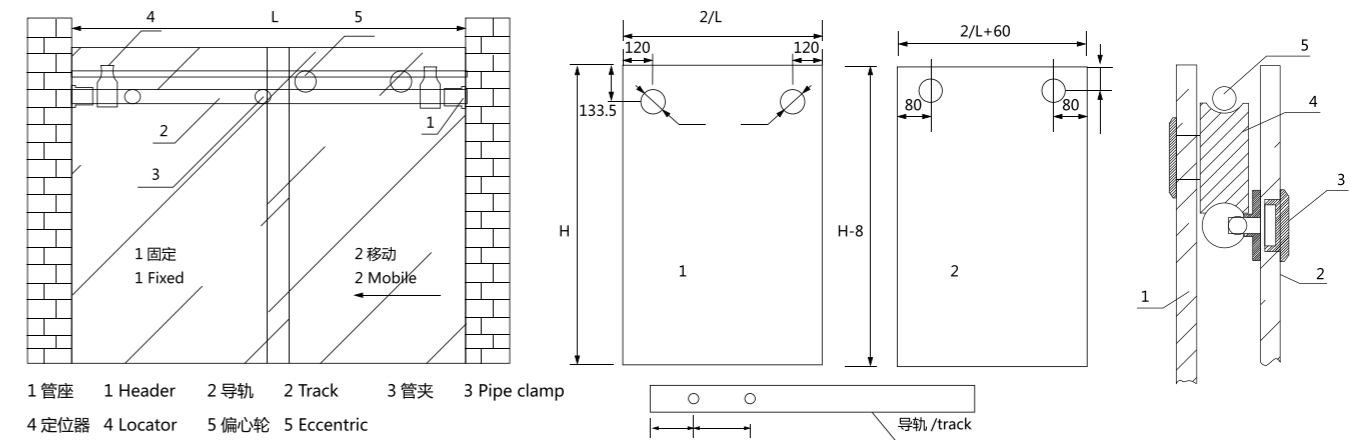
A001-6

A001-7

A001-8

连接件五金配件可根据实际需要另行选配。Above application is just for reference, will be changed according to the actual scene.

30x10 方管带防跳平面安装图  
30x10 installation of square pipe with jumping-proof pillar



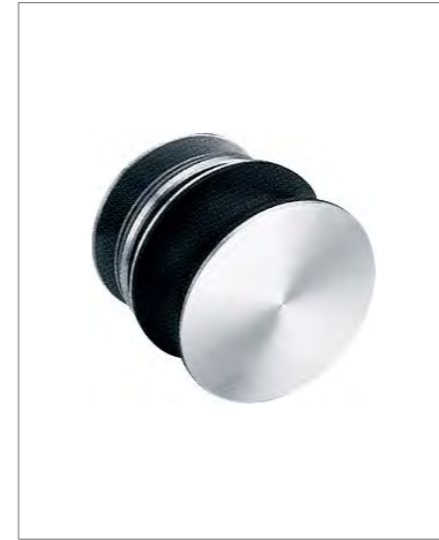
1 管座 1 Header 2 导轨 2 Track 3 管夹 3 Pipe clamp  
4 定位器 4 Locator 5 偏心轮 5 Eccentric







# A002



A002-1

标准配置 Standard application



A002-2



A002-3



A002-4



A002-5



A002-6



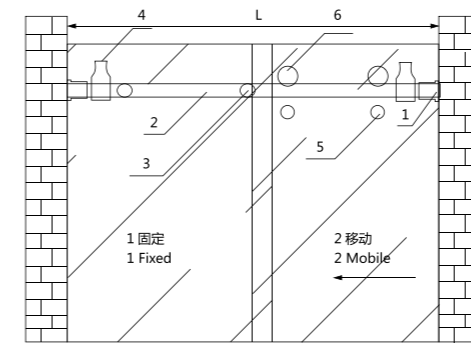
A002-7



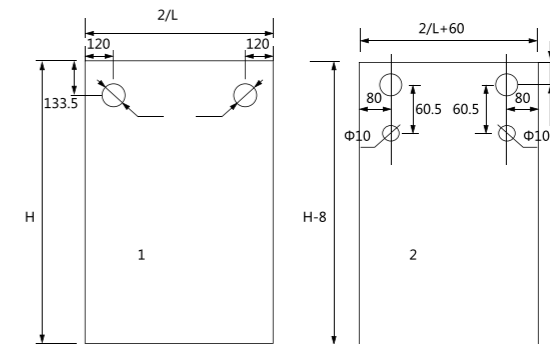
A002-8

连接件五金配件可根据实际需要另行选配。Above application is just for reference,will be changed according to the actual scene.

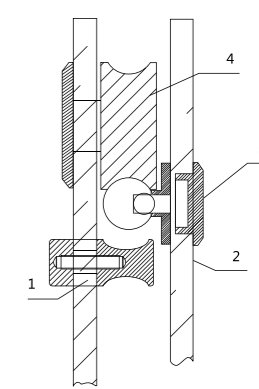
平面安装图  
Planar installation SSS



- 1 管座 1 Header
- 2 导轨 2 Track
- 3 管夹 3 Pipe clamp
- 4 定位器 4 Locator
- 5 防跳钉 5 jump nail
- 6 偏心轮 6 Eccentric



- 110 固定玻璃 /Fixed glass-240mm
- 导轨 /track



- 1 活动玻璃 1 Campaign of glass
- 2 固定玻璃 2 Fixed glass
- 3 管夹 3 Pipe clamp
- 4 偏心轮 4 Eccentric





# A003

标准配置 Standard application



A003-1



A003-2



A003-3



A003-4



A003-5



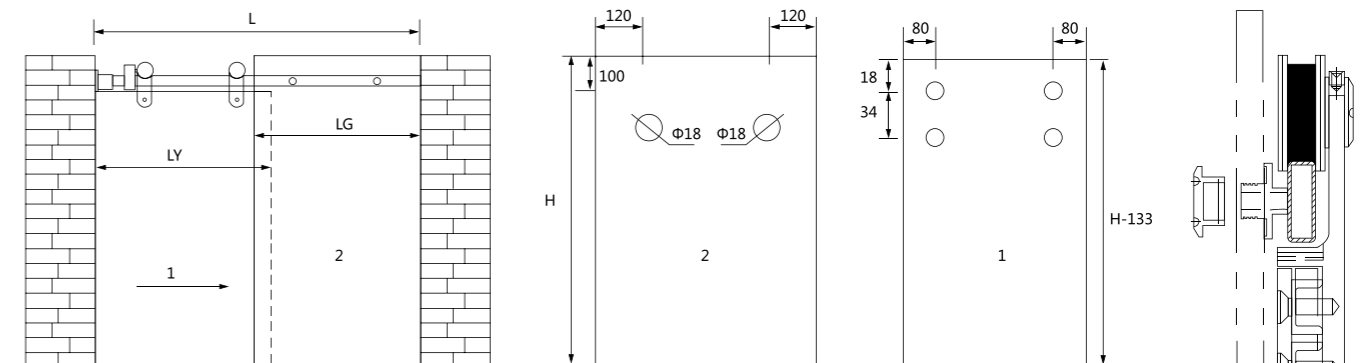
A003-6



A003-7

连接件五金配件可根据实际需要另行选配。Above application is just for reference, will be changed according to the actual scene.

安装开孔:  
Mounting hole:



$LG=L/2$   $LY=L/2+60$





# A004

标准配置 Standard application



A004-1



A004-2



A004-3



A004-4



A004-5



A004-6



A004-7



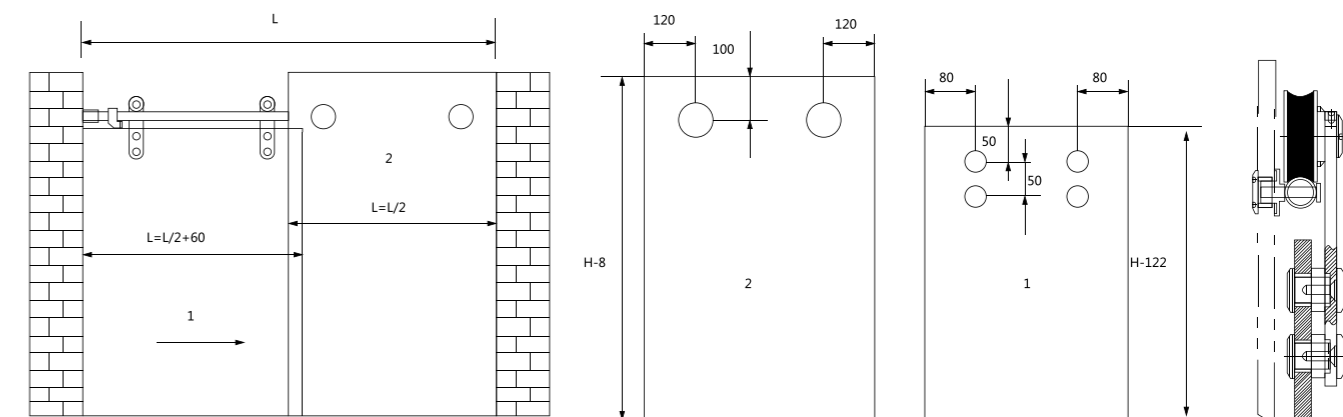
A004-8



A004-9

连接件五金配件可根据实际需要另行选配。Above application is just for reference, will be changed according to the actual scene.

安装开孔:  
Mounting hole:

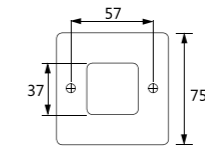






**XJ-L011**

移门拉手  
Sliding door handle

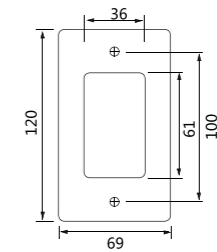


材质: 304#  
表面处理: 镜光 / 砂光  
Material: 304#  
Finish: PSS / SSS

● 拉丝 /SSS ● 镜光 /PSS

**XJ-L012**

移门拉手  
Sliding door handle

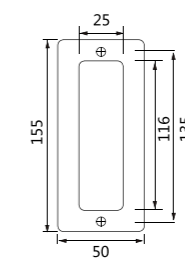


材质: 304#  
表面处理: 镜光 / 砂光  
Material: 304#  
Finish: PSS / SSS

● 拉丝 /SSS ● 镜光 /PSS

**XJ-L013**

移门拉手  
Sliding door handle



材质: 304#  
表面处理: 镜光 / 砂光  
Material: 304#  
Finish: PSS / SSS

● 拉丝 /SSS ● 镜光 /PSS

